



**QUALITY
INSIDE!**

SINCE 1984.

**MADE  IN
GERMANY**

ACCOMPLISH MORE



Accomplish more – attachments in series

As an original equipment manufacturer (OEM), ZFE has been producing backhoes, mini buckets and tilting buckets and shovels for various manufacturers and distributors of construction machinery since 1984. From mini buckets for the horticulture and landscaping industry to heavy-duty versions of the mining industry and special tools such as a hydraulic timber grab for attachment to wheel loader vehicles.

The basis for the manufacture and supply capacity of large numbers in series is the sophisticated and efficient interaction of design, production planning and manufacturing. Based on consistent high-precision manufacturing, we produce excavator buckets and shovels in top, reproducible quality at competitive prices.

Quality – Made in Germany

True to the company motto „Better Buckets“, we put quality first. In order to implement these high quality standards, all operations are carried out in house. Starting from development to series production, the entire process chain is „Made in Germany“. Only short paths and correspondingly short reaction times allow attachments to be manufactured in optimally consistent quality.

The ZFE modular construction system in combination with an intelligent warehouse management system allows the streamlined and efficient production of large quantities within short lead times.

The latest production technologies for innovative products

CNC lathes and milling machines, CNC-controlled flame cutting machines, boring machines and bending machines provide all the possibilities for the production of excavator buckets and wheel loader buckets in high numbers. This also applies to customised special designs developed according to customer specifications.

Innovative 3D CAD/CAM engineering systems in conjunction with modern machinery and the use of high-quality special steels, wear parts and teeth systems guarantee high product quality and supply.

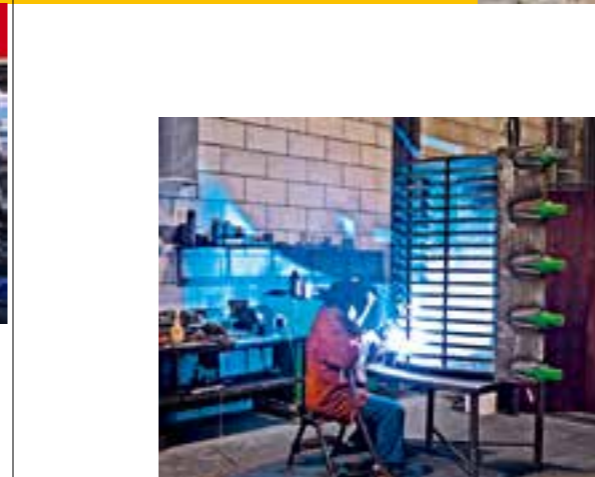
Know-how and technology from industrial mass production

As a member of the HS-Schoch group of companies we also have, in addition to the expertise of the HS-Schoch companies in wear protection, access to the many opportunities and experiences of HS-Schoch GmbH in industrial series production.

Wider range of machinery for assembly production

The wide range of machinery at the disposal of the HS-Schoch Group opens up countless possibilities for the production of individual assemblies for the subsequent production of excavator buckets and shovels. The effective use of machinery and structural improvements reduce the proportion of individual components and so often also the number of weld seams. Less heat penetration and so fewer associated stresses in the final product are the result of efficient production technologies.

The high degree of automation, which also includes the use of welding robots, guarantees consistent high quality at an attractive price-performance ratio.



4 / 21 EXCAVATOR

6 / 7 Backhoe bucket

8 / 9 Rock bucket / tilting bucket

10 / 11 Trench-clearing bucket, fixed and swivelling

12 / 13 Skeleton bucket, rock bucket / HS demolition arm

14 / 15 Special bucket

16 / 17 Ripper bucket / tunnelling bucket / ripper tooth

18 / 21 FRD demolition technology

22 / 27 MINI EXCAVATOR

24 / 25 Backhoe bucket / tilting bucket

26 / 27 Trench-clearing bucket / ripper tooth / special designs

28 / 29 FORESTRY AND WOOD

28 / Land-clearing rake / brushwood rake / star wheel planter

/ 29 Wood-sorting grab, timber grabber / root planer

30 / 37 WHEEL LOADER

32 / 33 Standard bucket / Special bucket

34 / 35 High-dump bucket / 4-in-1 combination bucket / side-dump bucket

36 / 37 Rock bucket / snow blade

38 / 39 QUICK COUPLER

40 / 41 FORK CARRIAGE

42 / 45 SPECIAL DESIGNS

46 / 47 GRIPPER

48 / 49 HARDOX

50 / 51 REPAIRS / CONVERSION

52 / 55 ESCO

56 / 57 MTG

58 / 65 TEETH COMPATIBLE

66 / 67 WEAR STRIPS AND BLADES

68 / 69 TRANSPORTATION, STORAGE AND COLLECTION SYSTEMS

70 / 73 FLATBED BOXES

74 / 75 LADEBOX / HS-SCHOCH SYSTEM SUPPLIER

76 / 77 TRUCK ACCESSORIES / TRUCK STYLING

78 / 79 HS-SCHOCH GROUP / CONTACT, DIRECTIONS

SIMPLY BETTER!

EXCAVATOR



Backhoe bucket Standard form

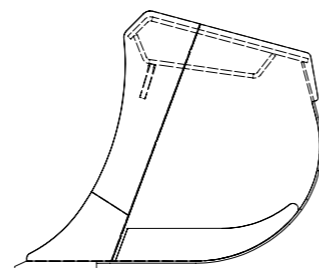


Backhoes compact

for backhoe class 9-14/10-50t

Design features:

- > Optimal penetration through tapered design
- > Excellent filling and removal properties
- > Blade protruding on the side
- > Tremendous breakout force through small distance from bucket pivot point to tooth tip
- > Wear-resistant quality steel
- > HARDOX bottom
- > BOROX HB 400 blade
- > Corners + side cutting edge + side section reinforcement S355
- > Flat cover plate, suitable for all conventional adapter frames



Backhoe bucket Heavy line / long form

Heavy line version

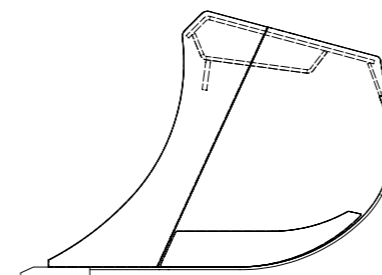
- > With BOROX HB500 wear strips
- > More sturdy blade design / thicker
- > More sturdy side cutting edge + side section reinforcement / thicker
- > All conventional types of teeth systems
- > Structural design in standard and as long extended form
- > Bottom, side cutting edge, side section reinforcement H450 (in the HD bucket)

Long form

- > Ideal for sewer work
- > More volume
- > Long straight bottom

Special equipment for Standard and long form

- > Crane hook
- > Attachment cutter
- > Cast sickles



Long form
Heavy line version



Long form
Compact

EXCAVATOR

**Rock bucket****Design features**

- > Excellent penetration properties through special bucket shape
- > Deep profile allows high volume at a minimum distance from bucket pivot point to the tooth tip, resulting in high breakout force.
- > Excellent filling and removal properties
- > Wear-resistant quality steel
- > Blades from HB 400 or higher
- > Wear strips on the back of the bucket
- > Reinforcement strips on the side walls

Special equipment

- > Blades made of Hardox HiTuf from 70 mm
- > Also available with ball guide
- > Optional with outcrops at the rear
- > Trapezoidal or pointed blades

Replaceable wear parts to:

- > Side cutting edge
- > Back of bucket
- > Side sections
- > Blade spacing

**Tilting bucket****Design features**

- > Very robust pivot bearing
- > Very low torsion-resistant design
- > Design optimised for levelling, loading and embankment work
- > Hydraulic cylinder with piston rod protection

Special equipment

- > Detachable blades
- > Throttle valve
- > Teeth
- > Cast sickles
- > Crane hook

Tilting bucket with Powertilt swivel motor**Design features**

- > For work and applications in extreme conditions such as in building pits or river beds.
- > Swivel range of 100 °, version up to 180 ° possible
- > High holding and torsional torque
- > Easy to maintain – no piston rods, swivel and cylinder bearings and hose guides.
- > Lower cutting widths possible than with conventional tilting buckets

POWERTILT



**Trench-clearing bucket
Fixed and swivelling**



Trench-clearing bucket

Design features

- > Larger filling capacity through light and robust construction
- > For all applications
- > Low torsion-resistant design
- > Blade made of BOROX HB 400

Special equipment

- > Rearward smooth cutting edge
- > Throttle valve
- > BOROX HB500 detachable blades
- > Crane hook
- > Spine cutting edge
- > Reinforcing rib up to the pivot bearing

Trench-clearing bucket, swivelling

- > Hydraulic cylinder with piston rod protection

**Trench-clearing bucket
with Powertilt swivel motor**

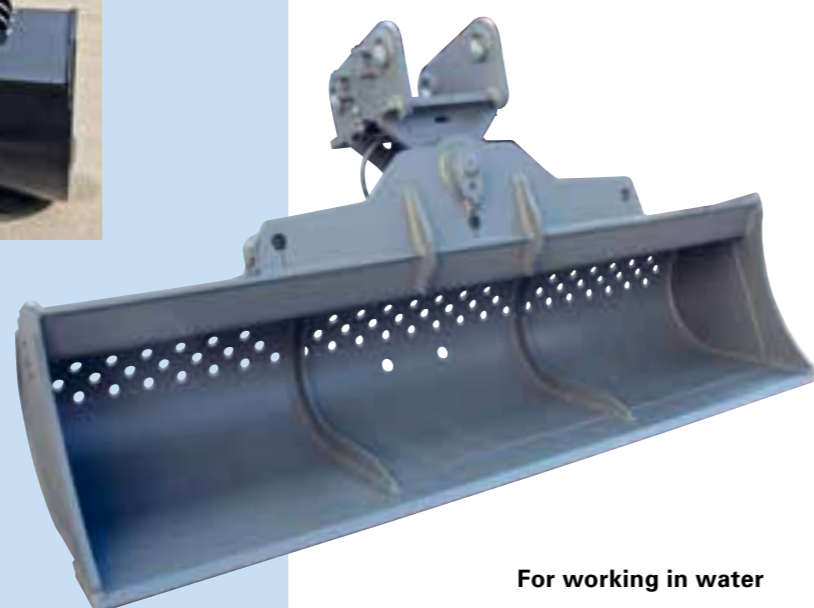
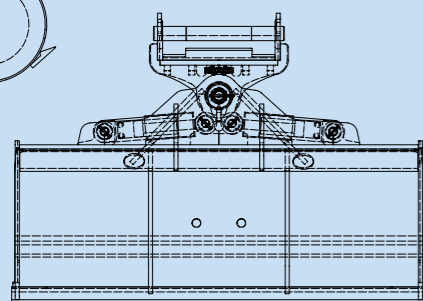
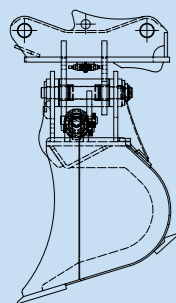
Design features:

- > Swivel range of 100 °, version up to 180 ° possible
- > High holding and torsional torque
- > Easy to maintain – version without piston rods, swivel and cylinder bearings and hose guides.

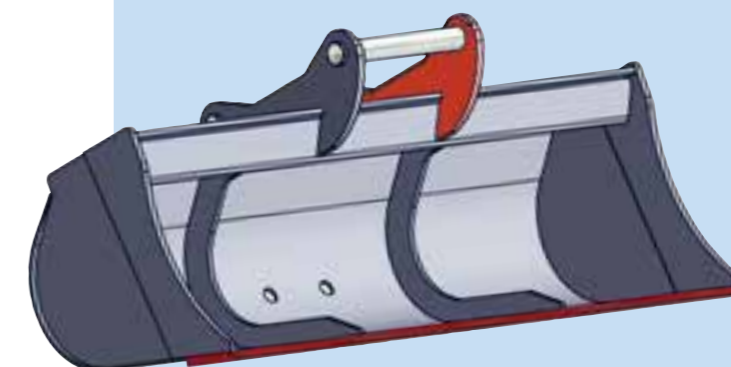
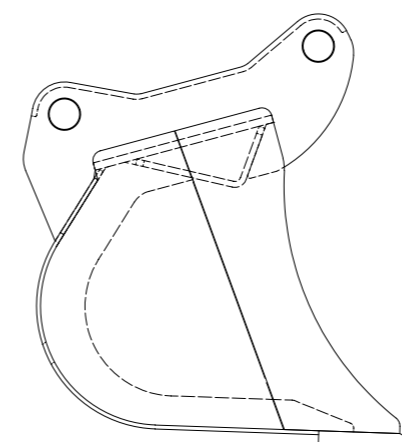


Special design

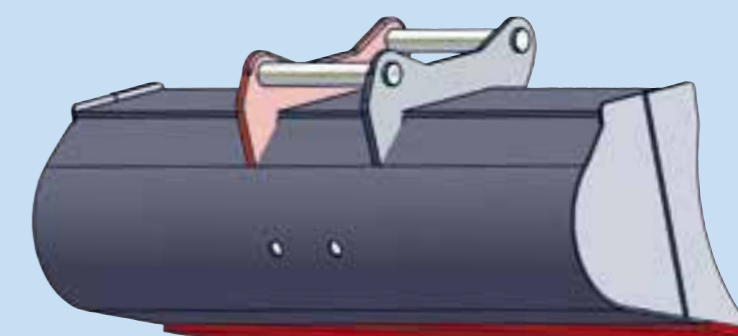
POWERTILT



For working in water



Trench-clearing bucket, fixed design



Skeleton bucket/rock bucket

HS demolition arm



Design features

- > Robust, torsion-resistant design
- > Leading edge spacing between the bars can be set individually.
- > Foundations or boulders can be transported lying flat in the bucket, made possible by the shaping of the side cutting edges.
- > Ideal for screening of fine particles, e.g. paving stones or recycling materials.
- > This increases crushing capacity and lowers removal costs.

Version with transverse struts

- > Mesh struts from 40/60 mm thick Hardox 400 round material.
- > Substantially less material tilt and jam on the round struts and the flow rate is correspondingly higher.



Version with baked bottom



- > Fixed or adjustable
- > Custom sizes and versions with teeth also
- > Optional with deflector and lifting lug



Special bucket



Hinged grip bucket

Ideally suited for sorting and gripping of all objects such as stones, wood, tree stumps, demolition waste, brushwood, etc.

- > For all medium and heavy-duty applications in earthworks and civil engineering
- > All excavation work can be done in combination with backfilling and grading
- > The front section of the bucket opens and closes by means of two hydraulic cylinders
- > Weight-optimised design through consistent use of Hardox
- > All bearings with lubrication points and bushings

In combination with a tilt rotator, a hinged grip bucket unlocks many possibilities to improve the efficiency of the excavator.



Customised bucket and special solutions according to the requirement profile



Grading / profile backhoe bucket

- > Class 10
- > Specially designed for use with rotators
- > Sidewalls slanted at 45 °, blades made of HB400/450, bottom of HB 400
- > Versions in 2-40 t possible



Ripper bucket Tunnelling bucket



Ripper bucket

- > Maximum ripping and breakout forces through special bucket geometry taking the excavator kinematics into consideration
- > Sophisticated tooth position prevents the jamming of the bucket, e.g. in trenching
- > Longer service life through ESCO® and Hardox®
- > Excellent for prying out foundations
- > High ripping and breakout performance makes using a hydraulic hammer superfluous in trenching, for example
- > For excavator operating weight up to 100 tons
- > Ideal in situations where blasting cannot be done



Tunnelling bucket

- For the heaviest duty in tunnelling
- > Special bucket geometry
- > Ideal for breaking out and ripping of boulders
- > Completely made of Hardox

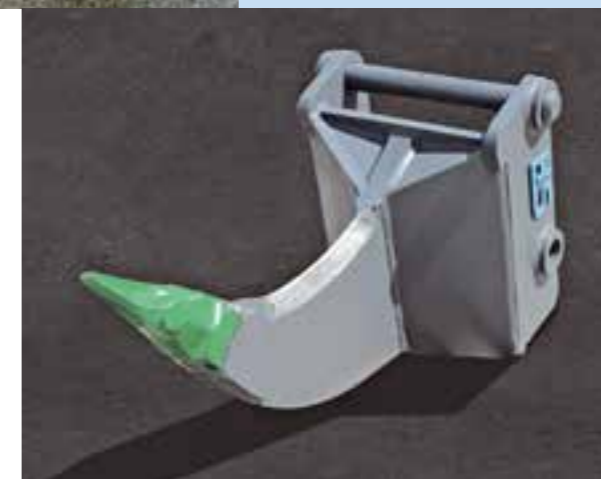


Ripper tooth Xcentric ripper



Ripper tooth

- > Highest directed breakout forces
- > Very good penetration
- > For heavy-duty ripping work in the rock and at demolition
- > Wear resistant through ESCO® and HARDOX®
- > From 1-100 tons excavator operating weight
- > Optional with additional side armour



With cutting edge

Vibration ripper tooth Xcentric ripper





DEMOLITION TECHNOLOGY EXCAVATOR

Hydraulic hammers

Small hydraulic hammers



Small hydraulic hammers

FX series – the revolution for mini excavators

- > Monoblock design. Only two moving parts reduce maintenance work considerably.
- > No tie rods.
- > Interchangeable cylinder tube enables a long service life.
- > No diaphragm accumulator.
- > Replaceable chisel guide bushings.
- > Extra long chisel guide bushings for FX45 and FX55 enable optimum chisel guide.
- > Oval retaining wedges from FX45 and FX55. Large forces can be absorbed. A long service life is guaranteed.
- > Optimal performance on each carrier device through a wide range of oil retention.
- > Wide range of original FRD insertion tools. The advantages that you need.

Large hydraulic hammers

Ready for the toughest applications

High breaking power

The use of premium-quality materials and production processes produces a rammer with less weight and high impact energy.

User-friendly

The new slim design of the FXJ series ideally equips it for use in demolition or as a production machine in the quarry.

The slim design increases efficiency in trenching and sewer work. In addition to the slim design, a newly designed damper system has also been introduced. It reduces noise and vibration levels.

Unmatched reliability

Japanese steel quality and hardening processes produce a product that can work longer and more efficiently.

Service

Our high production quality in combination with the new Monoblock design, the newly designed chisel retaining wedges and the FRD wear parts from Japanese steel contribute to the longer service life of each individual component. Total maintenance costs are greatly reduced.

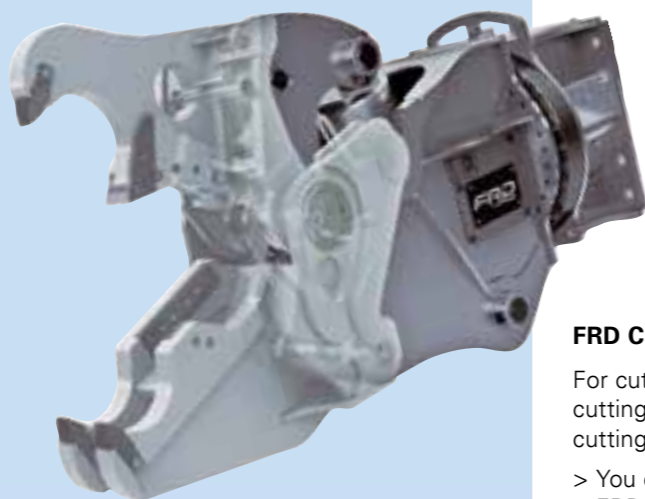
Low operating costs

Over the lifespan of the machine, the benefits of fewer downtimes and maintenance times as well as fewer spare parts lead to total costs per hour/year: "The lowest on the market"

Large hydraulic hammers



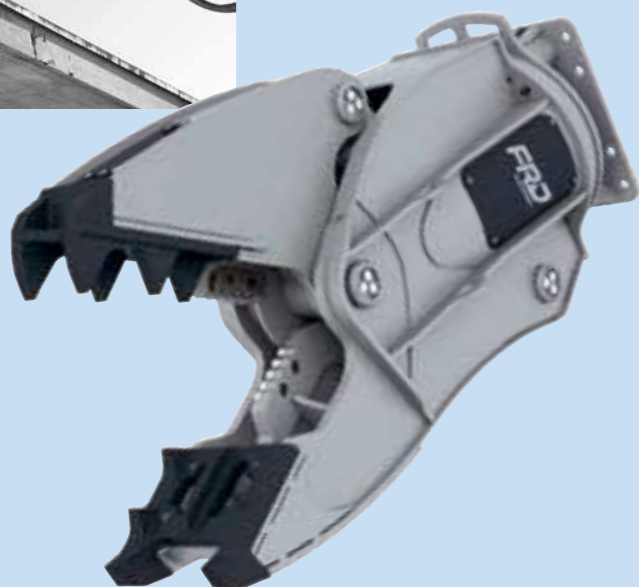
Chameleon Combination shears



FRD Chameleon VMX 22ER

For cutting of concrete structures, for cutting through reinforcing steel and for cutting steel profiles.

- > You can change the blades on the FRD Chameleon VMX22ER semi-hydraulically on site in less than 5 minutes.
- > You're always using the right tool
- > A basic unit
- > Four sets of jaws
- > Optimally protected hydraulics
- > Constructed of Hardox 400



VM series FRD combination shears

For cutting of concrete structures, for cutting through reinforcing steel and for cutting steel profiles. The hydraulic slewing gear of the FRD combination shears allows it to be used both in primary and secondary demolition.

- > Extremely stable housing with low dead weight
- > Speed valve for fast and efficient work
- > Feed opening with optimised shape for easy pick-up and loading of reinforcing steel
- > Optimum tooth geometry prevents crushed material from slipping, also when large concrete parts are handled
- > Interchangeable wear parts

Concrete pulverisers Universal demolition shears

VS series FRD concrete pulverisers

To crush concrete for recycling, to cut the reinforcing steel from the concrete and to crush road surfaces. Cutting and separating of large demolition waste into smaller pieces for easier loading and transporting.

FRD concrete pulverisers are characterised by the very wide opening, extraordinary high closing force and working speed of the jaws. In addition to recycling, the equipment is also used in the demolition of road or concrete surfaces.

- > Extremely stable housing with low dead weight
- > Speed valve for fast and efficient work
- > Feed opening with optimised shape for easy pick-up and loading of reinforcing steel
- > Optimum tooth geometry prevents crushed material from slipping, also when large concrete parts are handled
- > Interchangeable wear parts
- > Interchangeable tooth plates and teeth



FRD universal demolition shears V-system

The universal tool for all applications. The tandem cylinder design allows an extremely large jaw opening for this weight class. With the wear-resistant Hardox crushing arms, maximum breaking power is combined with minimal wear.

Depending on the work requirements various jaw systems can be attached to the base unit. The fast and easy interchangeability of the jaws makes the shears ideal for use on all construction sites, where more than one attachment needs to be used for the demolition because of the specific circumstances.



THE FULL

RANGE

MINI EXCAVATOR



MINI EXCAVATOR

Backhoe bucket

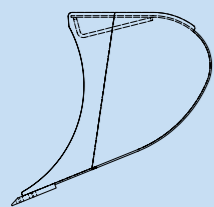


Design features

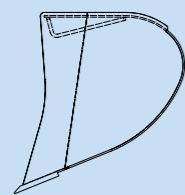
- > Optimal penetration through tapered design / 6 ° taper
- > Low stress through "step-by-step edging"
- > As a result, fewer weld seams and therefore less stress and so low crack formation throughout the bucket
- > Weight reduction at the same volume of about 10% in
- > Lower fuel consumption by the excavator
- > Blade protruding on the side
- > Excellent filling and removal properties
- > Bottom and side cutter made of premium-quality S700MC / HB 280
- > BOROX HB 400 blade
- > In Lehnhoff holding fixture, adapter with transport lug
- > Structural design in standard and as long extended form

Long form

- > Ideal for sewer work
- > More volume
- > Long straight bottom



Long form



Short form

Tilting bucket

Design features

- > Very robust pivot bearing
- > Very low torsion-resistant design
- > Design optimised for levelling, loading and embankment work
- > Hydraulic cylinder with piston rod protection

Special equipment

- > Detachable blades
- > Throttle valve
- > Teeth
- > Cast sickles
- > Crane hook

Tilting bucket with Powertilt swivel motor

Design features

- > For work and applications in extreme conditions such as in building pits or river beds.
- > Swivel range of 100 °, version up to 180° possible
- > High holding and torsional torque
- > Easy to maintain – no piston rods, swivel and cylinder bearings and hose guides.
- > Lower cutting widths possible than with conventional tilting buckets



POWERTILT



MINI EXCAVATOR



Trench-clearing bucket

Ripper tooth Special designs



Trench-clearing bucket, mini fixed and swivelling

Design features

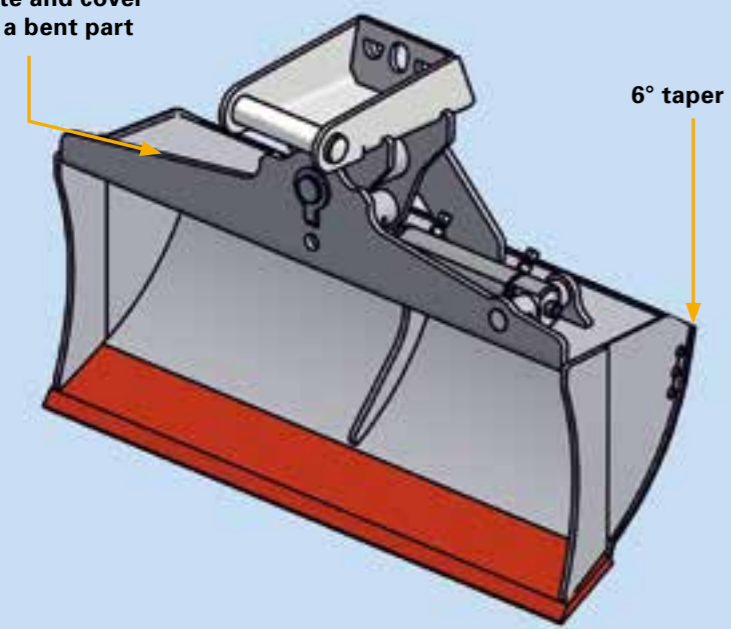
- > Front plate and cover plate from a bent part
- > Savings of 40 weld seams and consequently less stress and so low cracking throughout the bucket
- > Increase in volume by 6.5% with 10% weight reduction
- > Lower fuel consumption by the excavator
- > For all applications
- > Low torsion-resistant design
- > Bottom and side cutting edges from S355
- > Blades from Hardox 400

Special mini designs

- > Skeleton bucket with bars or baked bottom
- > Drainage bucket
- > Trapezoidal bucket
- > Ripper tooth
- > Land-clearing rake
- > Shoring spades



Front plate and cover plate are a bent part



Special equipment

- > Rearward smooth cutting edge
- > Throttle valve
- > BOROX HB500 detachable blades
- > Crane hook



Trench-clearing bucket, fixed design



Land-clearing rake
Brushwood rake
Star wheel planter

Wood-sorting grabs
Root slicer



Land-clearing rake

For all excavator classes from 3-50 tons

Wood-sorting grab, timber grabber

for the loading and handling of round timber

- > Versions from 0.9 to 3.5 m²
- > Completely made of Hardox 400
- > Direct mounting for wheel loader vehicles up to 20 tons, also with quick-coupling attachment
- > Also available with optional ejector / single tree trunk gripper



Brushwood rake

Ideal for sorting work in horticulture and landscaping



Land-clearing rake



Brushwood rake

Star wheel planter



Root king

Excavator class 2.5 to 25 tons

Efficient and cost effective:

- > Complete clearing of tree stumps/root-stocks including roots without the use of milling and special machines.
- > The slicer function cuts the roots into firewood-like pieces.
- > It can also be used in town alongside sidewalks because unlike milling, slicing does not endanger people.
- > Low dead weight.
- > Easy transportation and handling
- > All cutting edges from HB500, both sides chamfered
- > Two side cutting edges for more stability
- > No special excavator hydraulics required



with ejector



Root slicer

Star wheel planter

The star wheel planter makes uniform holes in the ground for the planting of various tree species.

- > Diameter 1,045 mm / width 300 mm
- > Can be filled with water
- > Completely made of Hardox 400
- > Vertical running position by means of spring-controlled positioning

LOAD – UNLOAD – CLEAR

WHEEL LOADER



WHEEL LOADER



Standard bucket



- Loading bucket**
- > Optionally with teeth or detachable blade.
 - > Borox400 blade

- Light material loading bucket**
- > More volume at the same cutting width
 - > Can be used for light materials of all kinds

- Special equipment**
- > Detachable blade
 - > Overflow plate
 - > Protective grate
 - > Viewing panel



Special bucket

- V4A version**
- Stainless steel version for handling and loading particularly corrosive materials



- Loading bucket with downholder**
- Special equipment**
- > Straight or round clamps
 - > Piston rod protection
 - > Ball head on the clamp
 - > Flow-through filter and adjustable back-pressure valve
 - > Equipment with teeth, detachable blade or single cutting edge



Skeleton bucket



Light material loading bucket





High-dump bucket



High-dump bucket

Design features

- > Rubber mounting
- > 2 externally positioned cylinders
- > Damped end positions
- > Line protection
- > 3-plated chrome piston rods
- > Dumping height up to about 4.8 metres
- > Viewing panel installation possible
- > Reversible detachable blades
- > Reinforced spherical bearings
- > Cutting edges and wear strips from HB 400
- > Protection against damage by special placement of the external cylinders



**4-in-1 combination bucket
Side-dump bucket**

4-in-1 bucket

For loading, grading, gripping and sorting.

Features

- > With teeth or detachable blade
- > Cylinder with reinforced spherical bearings.
- > Replaceable cutter in the rear section



Side-dump bucket

Design features:

- > Tilting to the right or left as option.
- > Optimally suited for material feeding and removal in confined spaces, such as inner-city construction sites, etc.
- > Ideal for sewer, dam, dike or tunnelling work.



WHEEL LOADER



Rock bucket

Rock bucket

- > Hardox in my body
- > BOROX in the frontline
- > Optionally with teeth or detachable blade.



Snow blade



Snow King

Give winter the cold shoulder

Use the Snow King quickly and gently clear roads, parking lots or sidewalks, etc. of snow and ice.

- > With attachment device for different carrier vehicles such as wheel loaders, tractors, forklifts and special-purpose vehicles.
- > Robust, torsion-resistant steel construction with spring flap segments and Vulkollan edging (Vulkollan strip 20 mm thick, 150 mm high)
- > Elastic edge protection to prevent damage by curb edges, etc.
- > Excellent corrosion protection due to surface sealing with KTL coating and subsequent powder coating in RAL 2000.

> With support leg.

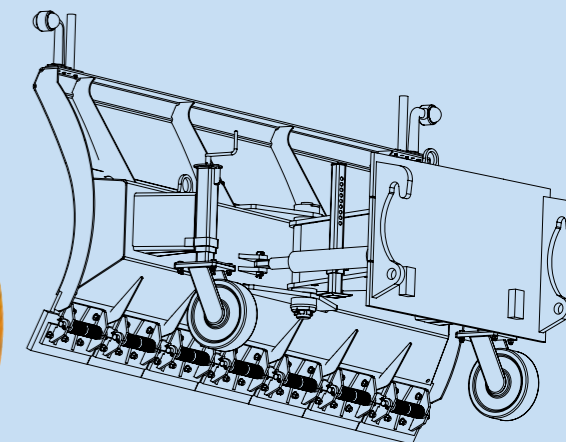
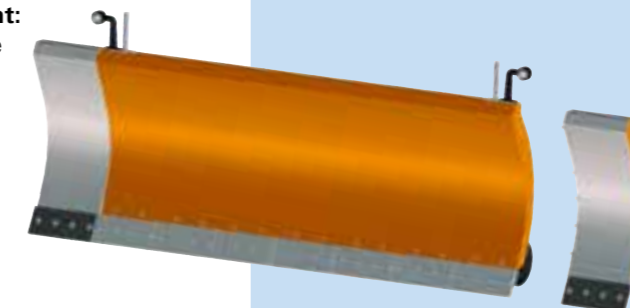
Top-of-the-line equipments as standard:

- > Heavy-duty castor, height adjustable over trapezoidal spindle.
- > Hydraulics with pressure-limiting valve.
- > 30 ° hydraulic swivel mechanism via 2 sturdy corrosion-resistant hydraulic cylinders.
- > With 4 roller-guided levelling.
- > Lighting equipment according to German Road Traffic Licensing Regulations (StVZO) with 7-pin plastic motorcar trailer plug (2-pin motorcar plug on request).
- > Flag holder.
- > Overall width 2,520 mm, clearing width 30 ° pivoted 2,180 mm, overall height 1,020 mm.

> Weight 585 kg.

Special equipment:

- > Bolt-on snow blade extension including Vulkollan strip, left and right, each 355 mm wide.

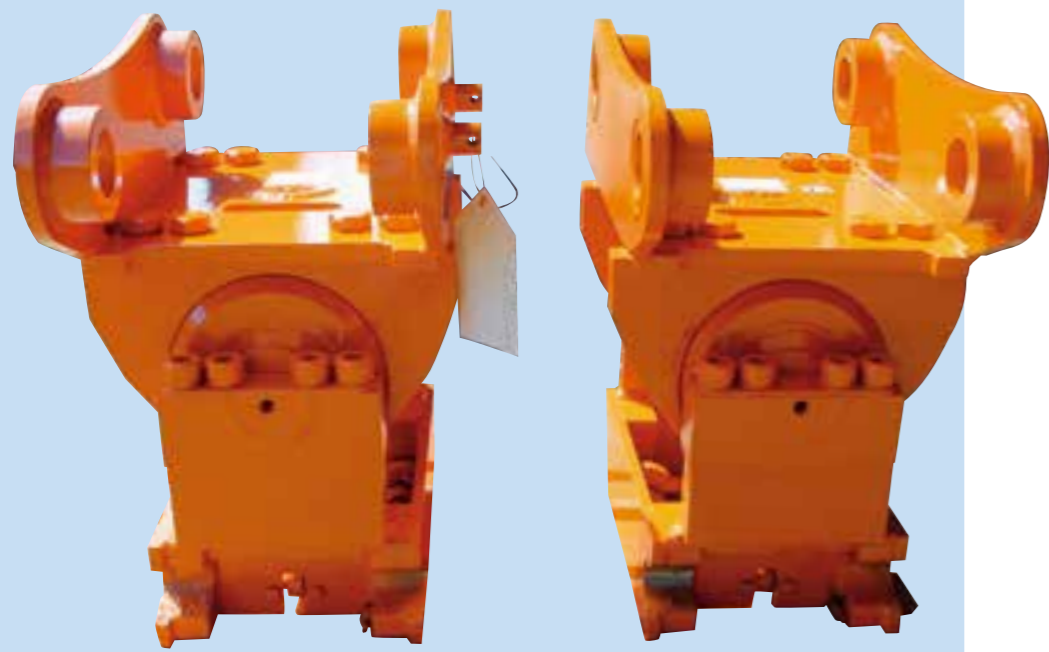


Accessories
Salt spreader

QUICK COUPLER



For excavators and wheel loaders



POWERTILT.



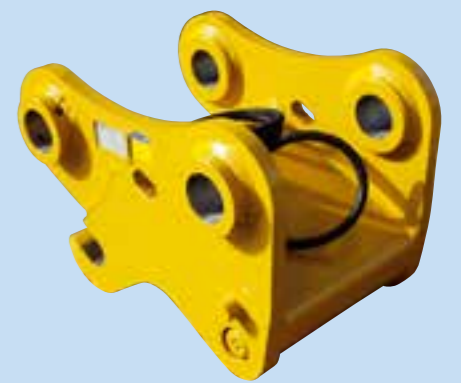
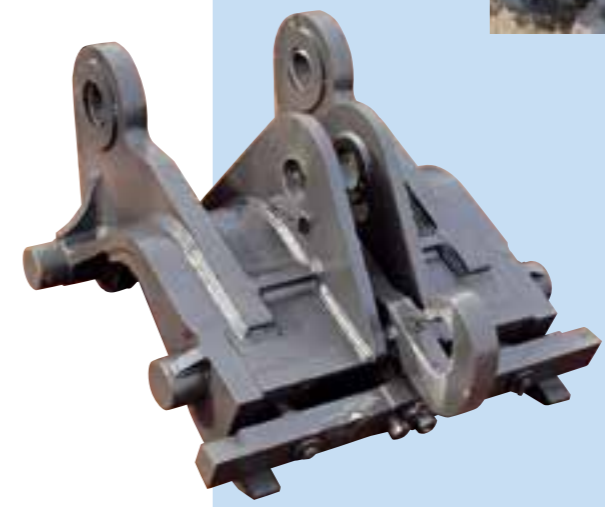
Whether hydraulic or mechanical, with us you get the matching solution for all excavator and wheel loader types.

Compatible to almost all quick change systems such as

- > Oilquick
- > Lehnhoff
- > LH
- > Verachttert
- > VOLVO / Akermann
- > SMP
- > Bofors
- > Atlas
- > Nado
- > Wimmer
- > Universal

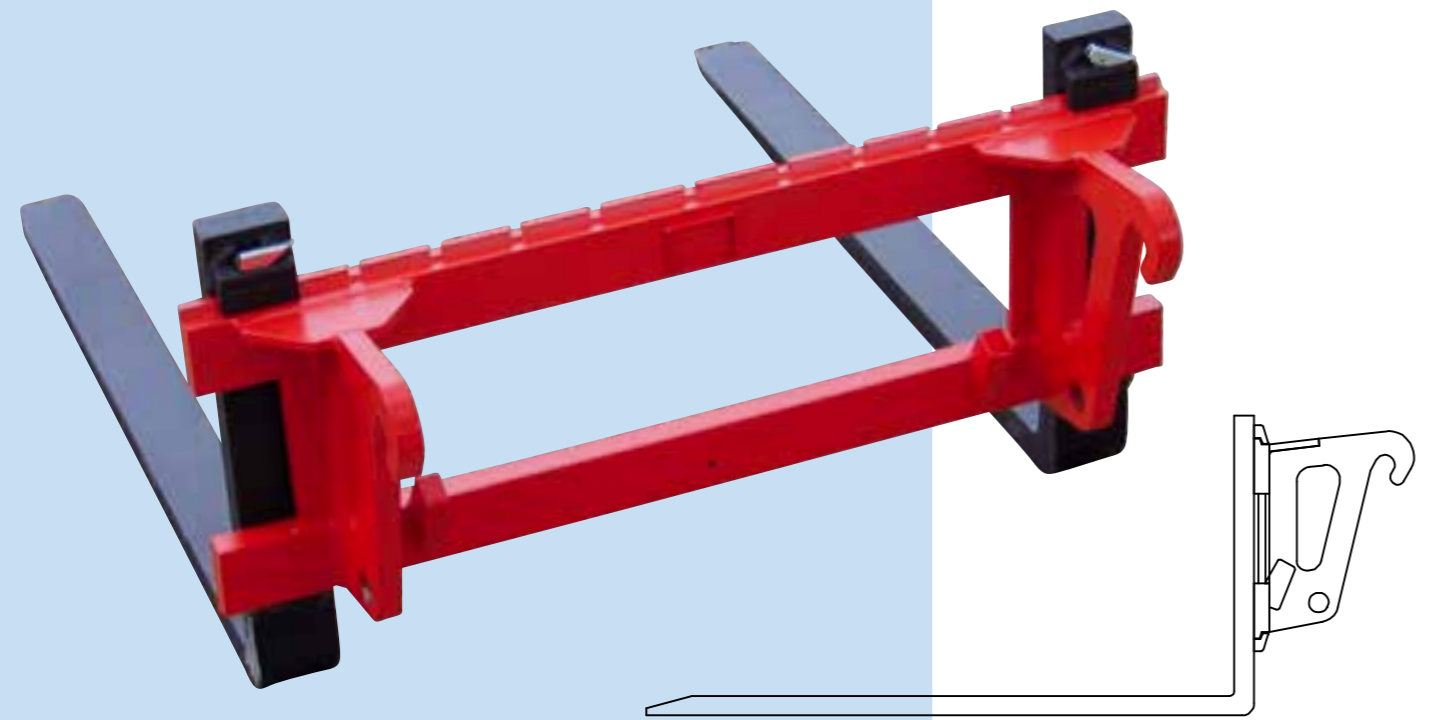


Wheel loaders



FORK CARRIER

For excavators and wheel loaders



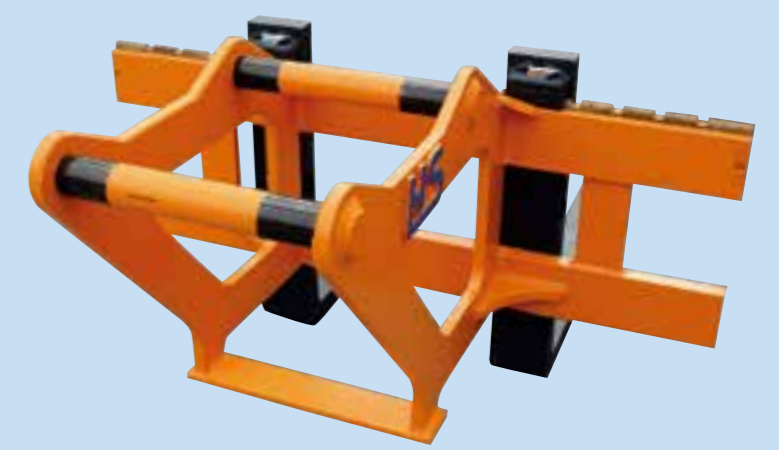
- > Attachment to wheel loaders, forklifts and excavators possible. Also with quick couplers
- > A wide selection of matching forks are available
- > Special widths possible



OilQuick OQ 70/55



Fork carriage with swivel motor



SPECIAL DESIGNS



Limestone rake



Shoring spades



Weldment

Attachment hook for wheel loaders



Foldable bulldozer blade



Blade extension

SPECIAL DESIGNS



Crane arm

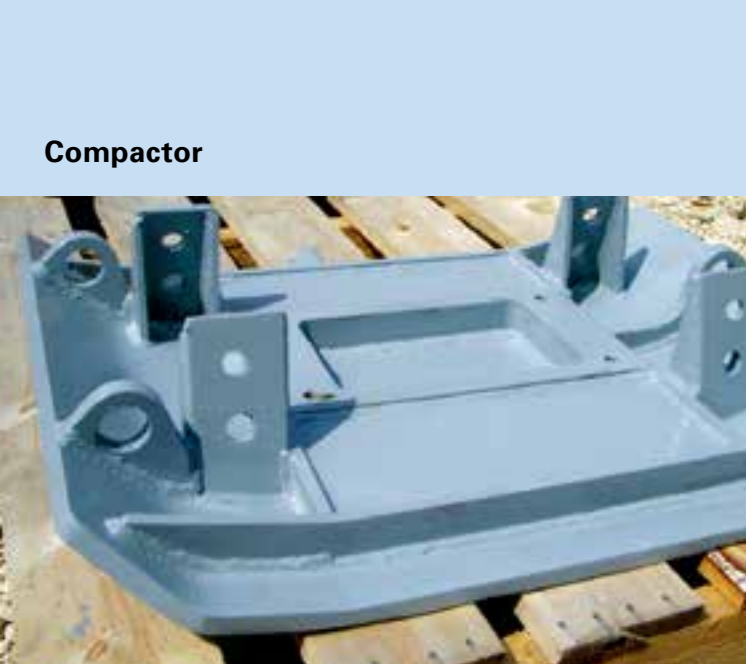
As diverse the tools that you need may be, as many and varied are the solutions that we can build for you. We develop and build the matching machine for all your applications.

With us, customer requirements and customer wishes are turned into individual customer solutions in no time at all. Whether a larger opening size or a larger turning radius for a backhoe bucket, whatever your requirements, for us these are actionable challenges.

And with the help of our special solutions, many projects can be implemented more efficiently and more cost-effectively. Everyone knows that a job is done better and faster with the right tool and it also makes twice as much fun.

For Menzi Muck

Equipment and support feet for walking excavator



Compactor



Pipe-shifting adapter



Demolition and sorting grab

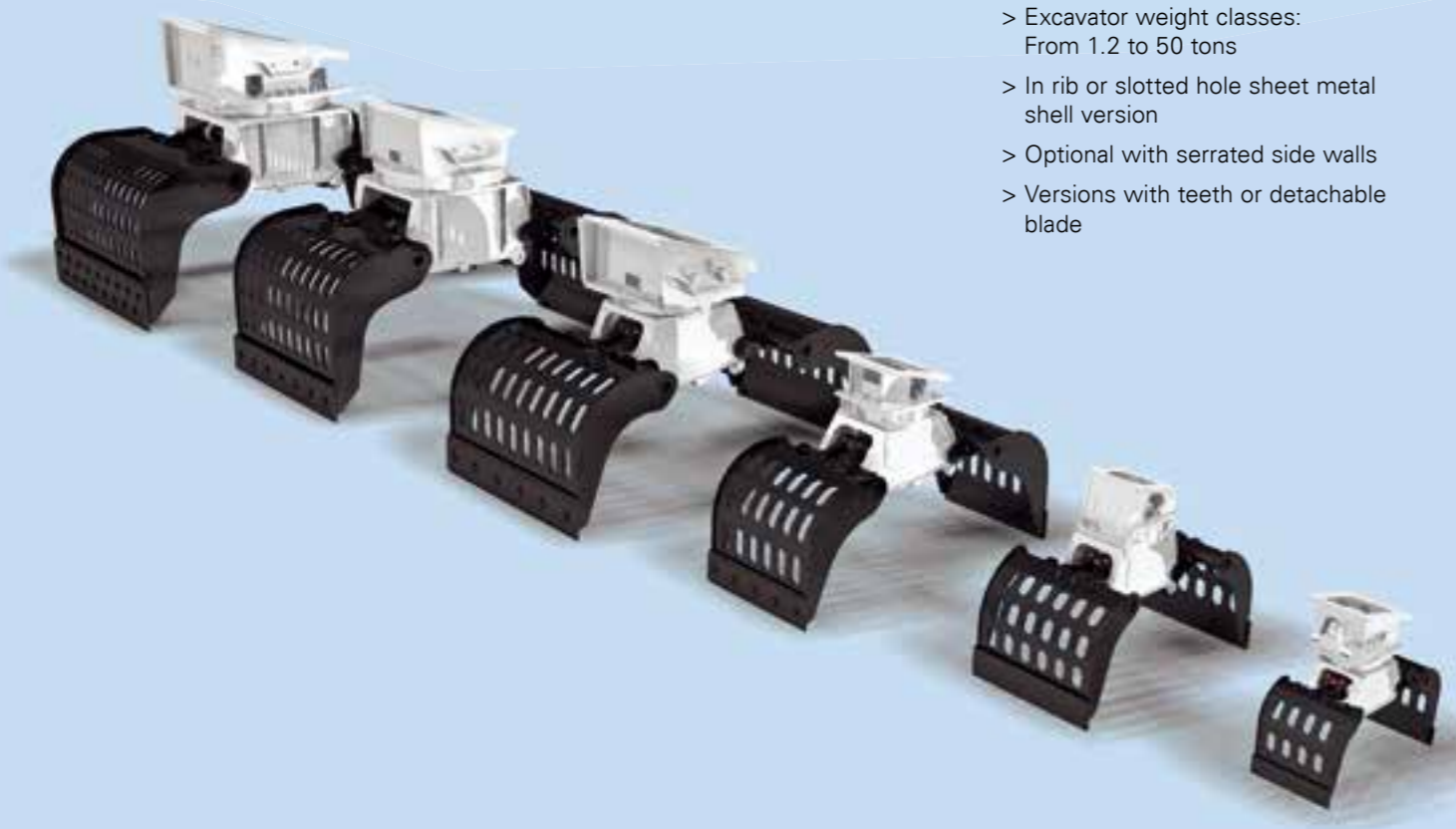
**Clamshell gripper
Orange peel grab**

GRIPPER



Demolition and sorting grab

- > Excavator weight classes: From 1.2 to 50 tons
- > In rib or slotted hole sheet metal shell version
- > Optional with serrated side walls
- > Versions with teeth or detachable blade



Clamshell gripper

- > Excavator weight classes: 1-30 tons
- > Grapple loader / light material grab up to 50 tons
- > Compatible with Atlas and Liebherr
- > Optional versions with teeth



Compatible with Atlas

Orange peel grab

- > Versions with 4 and 5 cups



Compatible with Liebherr



HARDOX® wear plate

HARDOX® wear plate

Schoch can draw on more than 25 years of experience and know-how in the machining of HARDOX® wear plate. It does not matter whether it is in production or regeneration – HS-Schoch incorporates HARDOX® wear plate in your accessory equipment and tools, increasing their service life and wear resistance.

Because the combination of strength, hardness and breaking strength makes HARDOX® one of the world's leading wear plates.

By using HARDOX® wear steel, you increase the performance and availability of your wear-stressed structures such as buckets, grabs, shovels, demolition tools, crushers, agitators and screens.

Depending on the type of tool and the particular application, HARDOX® wear plate doubles, triples or extends its service life tenfold.

HARDOX® offers optimum protection against damage and wear caused by stones, sand, scrap, minerals, waste and other abrasive materials.

HARDOX® is your key to optimum wear resistance. For the correct wear plate determines the performance and service life of your tools. And so also your success.

Whether in quarrying, road construction, mining or reclamation and recycling.

HARDOX® WEAR PLATE

Talk to us – so that we can explain to you how you too can benefit from the use of HARDOX® wear plates in the future.



HARDOX® Wearparts

HS-Schoch is a HARDOX® Wearparts partner

HS-Schoch is an SSAB-certified HARDOX® Wear parts partner. HARDOX® Wearparts is the international network that can produce wear parts from HARDOX® quality plate for companies. The stated objective of the members is to supply top-quality wear parts with the best service. Because repairs with HARDOX® wear steel does not incur costs, but is an investment in the future. HARDOX® Wearparts meets the highest requirements and makes tools and machinery more resistant and minimises downtime.

HARDOX® steel can be bent as needed, drilled, cut, welded or milled to meet the most diverse requirements. Only companies who have the appropriate expertise in the machining of HARDOX® quality wear plates and the right machinery may use the HARDOX® Wearparts seal of quality for themselves.

HARDOX® WEARPARTS

As a HARDOX® Wearparts partner, we have more to offer. And you can benefit from this added value. Based on your drawings and specifications, we manufacture wear parts of extreme accuracy with HARDOX® steel for you. Our high standards are your guarantee of excellent results.

Change your repair strategy and invest in HARDOX® and you will benefit in the future from a longer service life of your wear parts.

Tell us what we can do for you.



Wear protection can be as simple as effective – extend the life of your buckets with HARDOX.



REPAIRS CONVERSIONS

From old to new: Repairs and conversions



From old to new

“Where wood is chopped, splinters will fall” And when the going gets tough, it can happen that the tools used have the “injuries” to show for it. But no matter whether there are signs of wear or break damage that your tools are subjected to, we regenerate your buckets, blades and grippers, etc. This is done so well that they can handle many loads better than before.

Because we know what the effect of long downtimes can be on your business, we put in every effort to get you back to work as quickly as possible. This is what we mean by top service.

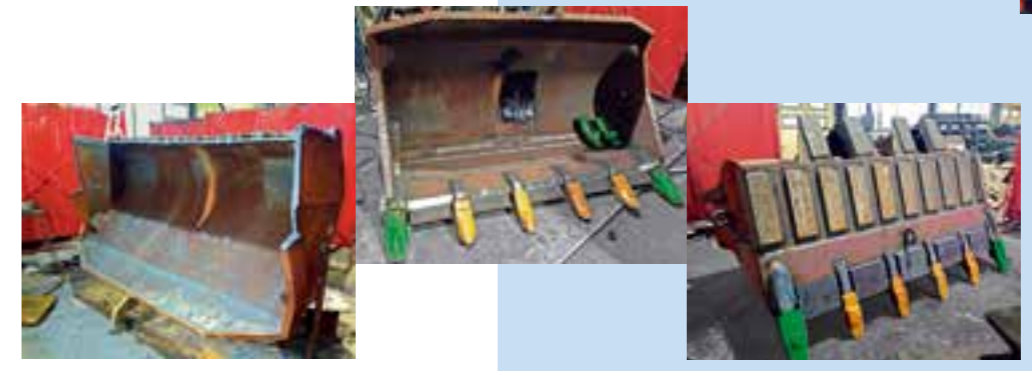
Take advantage of our high welding quality. We are certified according to DIN EN187



Boring machines:
Boring – welding – finish-boring

We bore, weld on and finish-bore worn bearings on buckets and shovels to final dimensions.

Even out in the field – we come to you.





ESCO® has been producing wear-resistant products such as tooth systems, shrouds and wear plates for more than 90 years. ESCO® products are used in mining, in construction, in crushing plants, in dredging, in conveyors, in demolition and in forestry.

ESCO® uses an average of 15% more wear metal in its products than in competitor products. The steel alloy is also harder and more resistant than in comparable competitor products.

By doubling service life and with excellent penetration, ESCO® wear parts are your guarantee for efficient operations while minimising your spare part and regeneration costs at the same time.

Benefit from ESCO®

- > ESCO® tooth systems such as **ULTRALOK™, SUPER V® and SV2®** increase the performance of buckets and equipment, while reducing costs and downtime at the same time.
- > **ESCO TOPLOK®** are mechanically fastened shrouds that provide excellent protection of the lip with good penetration.
- > **ESCO KWIK-LOK®** provides efficient protection against wear to buckets and mobile systems. Draglines, bottom-dump buckets, high and backhoe buckets as well as loading buckets, for example, can all be protected with wear plates.

ESCO ULTRALOK™

ESCO Ultralok™ is a hammerless tooth system consisting of only two parts that you can change easily and safely on site. You do not even need a hammer.

ESCO Ultralok™ has more to offer.

Better gripping performance

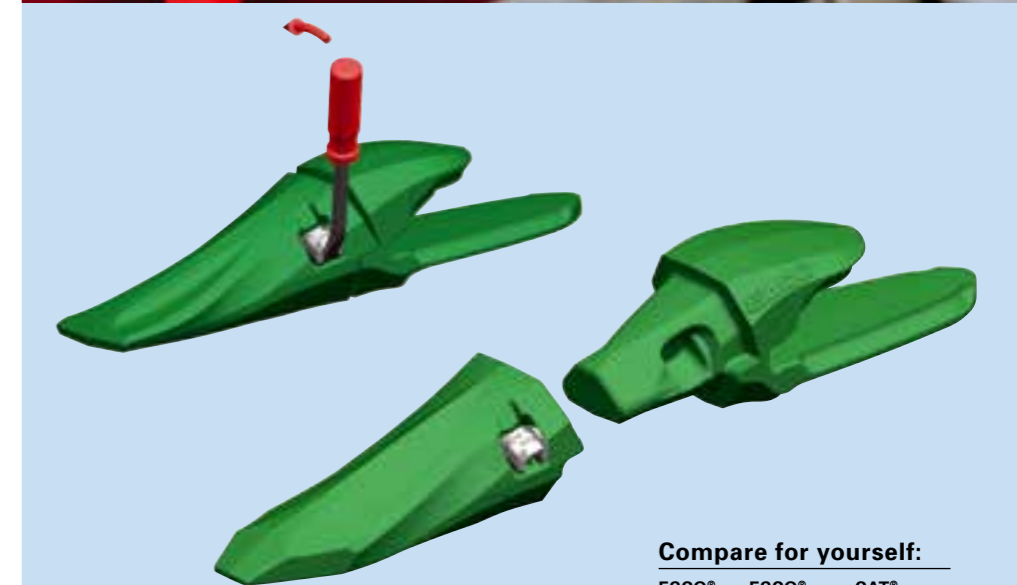
- > Through flatter nose
- > Smooth transition between tooth and holder
- > Streamlined tooth shapes

Longer service life

- > A high share of wear material
- > Extremely hard and tough steel alloy
- > Less wear due to excellent penetration properties

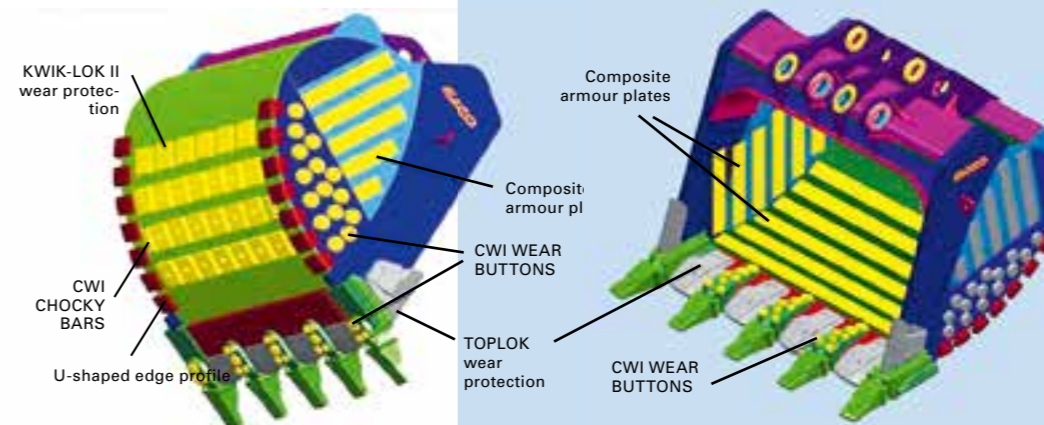
Easy and safe to handle

- > Safety catch integrated in tooth
- > Tooth change without the aid of a hammer
- > A safety catch for all tooth sizes



Compare for yourself:

ESCO® Ultralok Size	ESCO® SUPER V Size	CAT® J-System Size
U20	V19	J220/225
U25	V23	J250
U30	V29	J300
U35	V33	J350
U40	V39	J400
U45	V43	J450/460
U55	V51	J550
U60	V59/V61	J600



Of course you can also order all other ESCO tooth systems such as ESCO **Super V** and **special-purpose** teeth for hot slag, etc. as well as **Toplok shrouds** and **wear plates** from us.



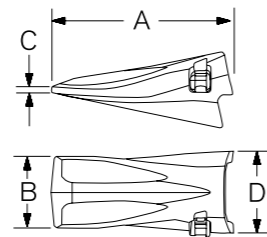
ESCO Ultralok® tooth system



ESCO

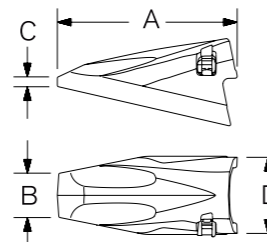
Tooth shape S / standard

Description	Dimensions in mm				Weight kg
	A	B	C	D	
U20S	176	69	7	78	2,0
U25S	211	82	8	93	3,4
U30S	240	91	10	105	5,0
U35S	265	102	11	119	7,0
U40S	294	122	12	134	9,9
U45S	328	129	13	149	14,0
U55S	372	155	16	169	20,5
U60S	429	168	16	195	30,9



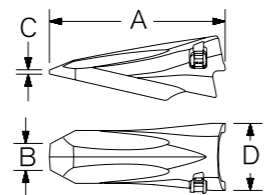
Tooth shape A / abrasion, bucket tooth

Description	Dimensions in mm				Weight kg
	A	B	C	D	
U25A	219	55	13	93	5,8
U30A	251	60	11	105	8,4
U35A	279	69	15	119	12,0
U40A	314	78	15	134	17,0
U45A	351	87	19	149	24,0
U55A	397	98	21	169	35,0
U60A	457	113	24	195	54,1



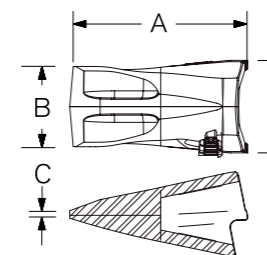
Tooth shape AP / abrasion penetration

Description	Dimensions in mm				Weight kg
	A	B	C	D	
U20AP	200	35	5	78	2,7
U25AP	242	52	16	93	4,8
U30AP	275	42	7	105	7,1
U35AP	298	48	8	119	10,1
U40AP	344	60	12	134	14,3
U45AP	390	58	10	149	20,0
U55AP	442	67	11	169	29,7
U60AP	494	76	16	195	44,5



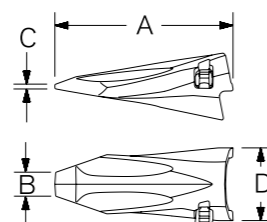
Tooth shape R / abrasion

Description	Dimensions in mm				Weight kg
	A	B	C	D	
U60R	375	25	16	195	24,2



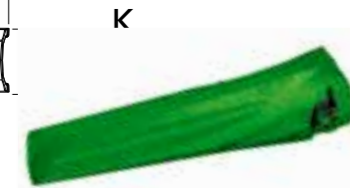
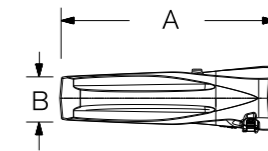
Tooth shape C / chisel tooth

Description	Dimensions in mm				Weight kg
	A	B	C	D	
U20C	191	27	10	78	2,0
U25C	229	31	10	93	3,4
U30C	259	36	9	105	5,0
U35C	291	40	8	119	7,0
U40C	328	45	9	134	10,0
U45C	366	50	10	149	14,0
U55C	415	57	11	169	20,6
U60C	454	75	11	195	30,0



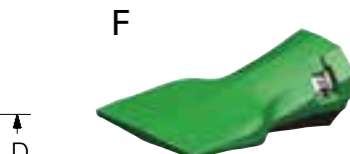
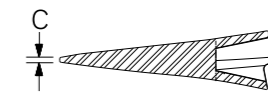
Tooth shape K / gripper tooth

Description	Dimensions in mm				Weight kg
	A	B	C	D	
U35K	402	80	9	119	9,5



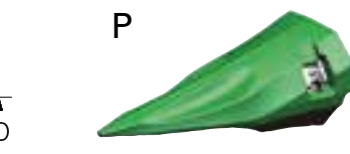
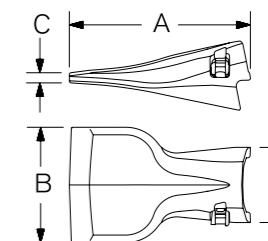
Tooth shape F / spade tooth

Description	Dimensions in mm				Weight kg
	A	B	C	D	
U20F	176	114	11	78	2,4
U25F	210	127	12	93	4,1
U30F	259	152	14	105	6,5
U35F	287	178	16	119	9,3
U40F	316	203	18	134	13,0
U45F	356	228	20	149	18,0
U55F	397	254	22	169	26,1
U60F	411	279	26	195	39,8



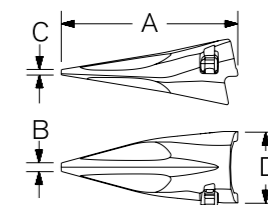
Tooth shape P / pointed/rock tooth

Description	Dimensions in mm				Weight kg
	A	B	C	D	
U20P	202	10	7	78	1,7
U25P	224	12	6	93	2,9
U30P	274	14	9	105	4,1
U35P	298	16	10	119	5,7
U40P	335	18	11	134	8,1
U45P	360	19	12	149	11,0
U55P	420	22	14	169	16,5
U60P	466	22	14	195	24,7



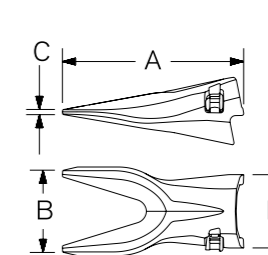
Tooth shape T / double-point tooth, rock tooth

Description	Dimensions in mm				Weight kg
	A	B	C	D	
U20T	202	93	7	78	2,1
U25T	224	112	8	93	3,3
U30T	274	125	7	105	5,2
U35T	298	143	8	119	7,0
U40T	334	161	10	134	9,9
U45T	370	180	11	149	14,0
U55T	419	204	13	169	20,0
U60T	466	235	15	195	30,4

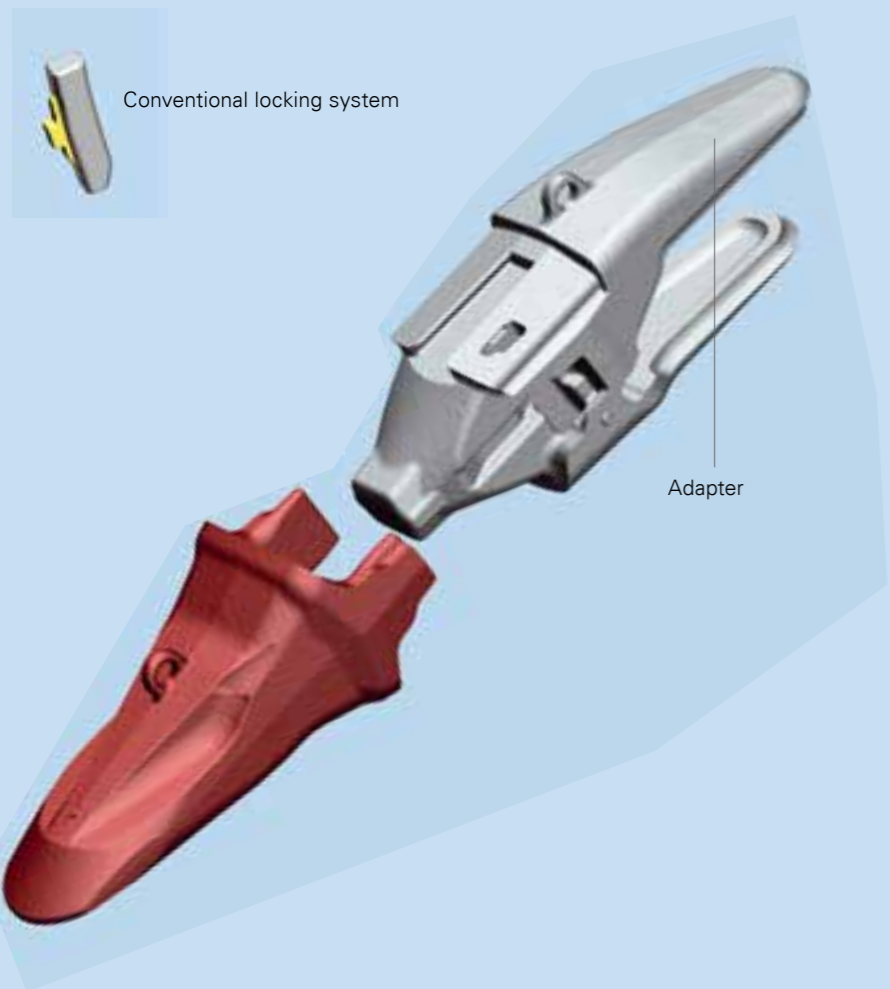


Tooth shape H / heavy

Description	Dimensions in mm				Weight kg
	A	B	C	D	
U25H	227	32	14	93	4,1
U30H	257	36	16	105	5,8
U35H	289	41	18	119	8,4
U40H	326	46	20	134	12,1
U45H	364	51	22	149	17,0
U55H	413	58	22	169	24,5
U60H	454	68	30	195	35,6



You can acquire all MTG teeth and protector systems from us – contact us.



MTG Systems KingMet Traditionally robust and durable teeth.

The robust and durable teeth and adapter system enable the teeth to work safely and without breaking. The elliptically shaped nose ensures that the contact surfaces between tooth and adapter are larger, higher forces can be absorbed and the life of the adapter is extended.

Quick and easy teeth change. The system comprises a vertical locking pin to reduce possible side disturbances. The vertical pin consists of two parts:

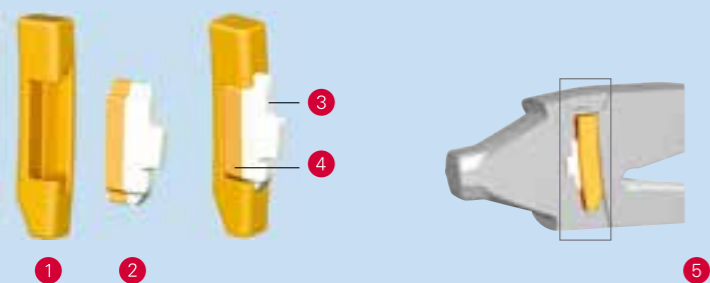
The pin body, which is made of the best quality steel to give it optimum durability and to allow its reuse.

The lock consists of two components, which are integrally connected to each other, namely ElastoMet, which gives it elasticity and flexibility, and compact polyurethane.

The combination of a sturdy, reusable body and an elastic, flexible pin provides great flexibility in assembly and, in turn, the greatest reliability and guarantee that the MTG Systems KingMet locking system works properly.











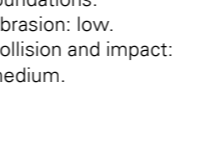
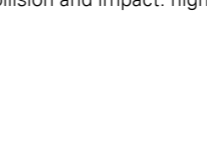
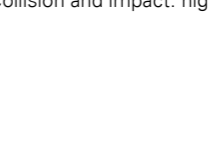
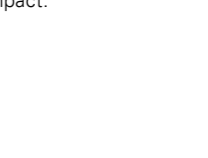
Teeth with longer service life. Great durability and performance, because of the good wear material and because they are made of steels with the MTG Steels trademark, which ensure improved service life and fewer breaks. Long service life of the locking system. The locking pin is perfectly protected against wear and impact as it is housed in the adapter.

Teeth stay sharp always. Improves penetration of the bucket. The specially designed profile of the connection provides excellent penetration throughout the service life of the tooth.



Conventional locking system

- 1. Pin body
- 2. Lock
- 3. Polyurethane
- 4. ElastoMet
- 5. Fully protected pin body

 E Extra For excavators on loose terrain and in quarries with pre-exploded rock under particularly high abrasion conditions that require good penetration.	 EX Extra X For excavators on loose terrain and in quarries with pre-exploded rock under extremely high abrasion conditions that require good penetration. Collision and impact: medium-high.	 U Universal For excavators working on loose terrain with low abrasion and multiple applications. In particular, for the creation of trenches and fortifications. Collision and impact: medium-low.	 P Penetration For excavators on compact terrain where high abrasion and impact stress prevail and a high level of penetration is required. Particularly suitable for applications in quarries with pre-exploded rock.	 S Standard For excavators working on loose terrain with low abrasion that require good penetration. Especially suitable for work under varying conditions and multiple applications.
 F Width For excavators in levelling, trench digging and cleaning work. Very useful in building foundations. Abrasion: low. Collision and impact: medium.	 V Vector For excavators on very compact terrain. Abrasion: low. Collision and impact: high.	 W Double vector For excavators on extremely compact terrain. Abrasion: low. Collision and impact: high.	 I Impact For excavators and loaders on terrain with low abrasion and high collision and impact.	 D Delta For loaders on compact terrain where high penetration force and simultaneously good abrasion resistance is required.
 A Abrasion For loaders on loose terrain and in quarries with pre-exploded rock in particularly abrasive conditions that require good penetration.	 AX Abrasion X For excavators and loaders in applications with an extreme level of abrasion. Especially suitable for hot slag.	 H Heavy For loaders on loose terrain with severe abrasion. The tooth width facilitates the loading of the material.	 L Length For loaders on loose terrain or in quarries on pre-exploded rocks without high abrasion. Assembly with FC adapters is recommended for cleaning tasks.	



A tooth for a tooth CAT-compatible

We can also supply you with tooth systems from **Volvo, Komatsu, Hendrix, LH-Z** and **Combi Parts**.

TEETH COMPATIBLE

Standard CAT-compatible

Orig. No. / Ref. No.	Dimensions in mm				Weight kg	Size
	B	H	K	L		
1U3202	55	63	40	148	1,2	J200
1U3252	65	85	55	193	2,8	J250
1U3302	88	96	67	220	4,4	J300
1U3352	90	105	75	243	5,8	J350
7T3402	105	127	88	273	9,1	J400
9W8452 / 1U3452	116	125	98	300	11,1	J460
9W8552 / 1U3552	140	142	120	333	17,2	J550
6I6602	190	182	146	395	28,1	J600

HD long CAT-compatible

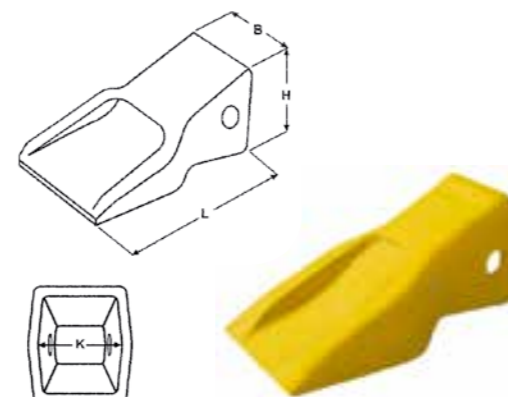
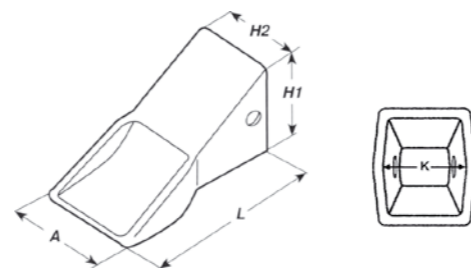
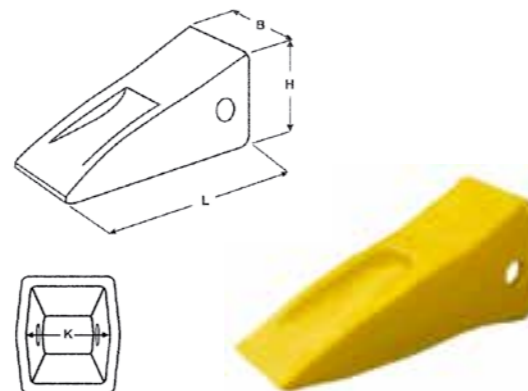
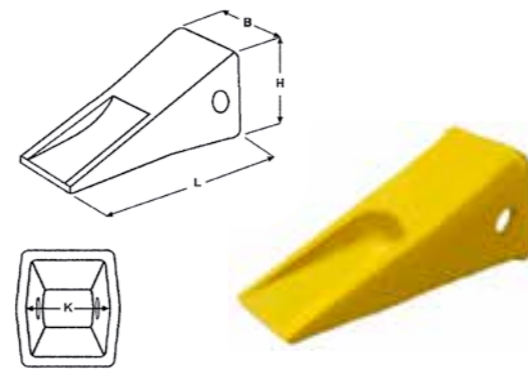
Orig. No. / Ref. No.	Dimensions in mm				Weight kg	Size
	B	H	K	L		
9N4252	66	92	55	200	3,4	J250
9N4302	81	105	67	226	5,6	J300
9N4352	94	115	75	260	8,1	J350
8E4402	110	131	88	287	11,1	J400
9N4452	125	145	98	325	17,2	J460
9N4552	140	160	120	360	26,7	J550

Bucket tooth CAT-compatible

Orig. No. / Ref. No.	Dimensions in mm				Weight kg	Size
	H1	H2	K	L		
4T2303	105	81	67	226	5,6	J300
4T2353	115	84	75	260	8,1	J350
7T3403	131	110	88	287	11,1	J400
9W1453	145	125	98	325	17,2	J460
9W1553	160	140	120	360	26,7	J550

Bucket tooth abrasive CAT-compatible

Orig. No. / Ref. No.	Dimensions in mm				Weight kg	Size
	B	H	K	L		
9N4253	65	92	55	200	4,8	J250
9N4303	80	104	67	225	7,5	J300
9N4353	95	113	75	253	10,8	J350
9N4453	168	148	98	310	21,6	J460
9N4553	175	153	120	330	31,3	J550



Spade tooth CAT-compatible

Orig. No. / Ref. No.	Dimensions in mm				Weight kg	Size
	A	B	C	K		
109-9200	150	105	5	40	2,2	J200
3G8250	195	115	8	55	3,3	J250
4T1300	215	150	8	67	5,7	J300
8J3350	240	178	8	75	8,3	J350
107-3400	267	205	8	88	11,3	J400
8J1450	285	230	8	98	16,2	J460
7J9550	330	285	10	120	25,0	J550

Spade tooth HD CAT-compatible

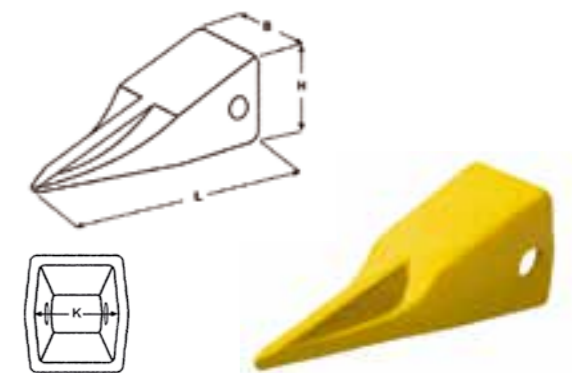
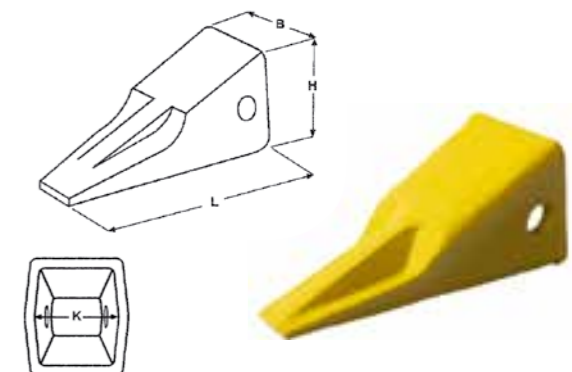
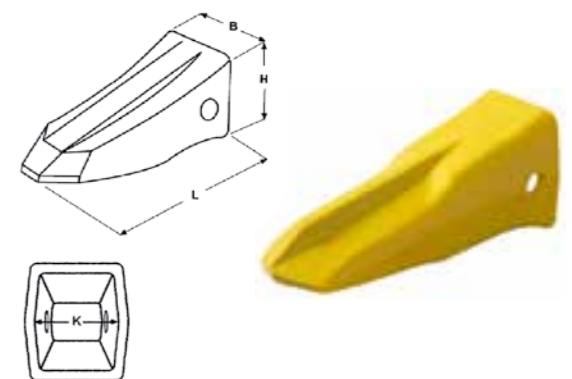
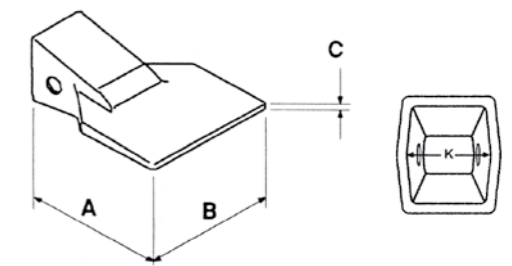
Orig. No. / Ref. No.	Dimensions in mm				Weight kg	Size
	B	H	K	L		
4T2303PT	89	110	67	258	7,6	J300
4T2353PT	102	116	75	290	9,8	J350
7T3402PT	117	124	88	320	14,0	J400
9W1453PT	137	148	98	354	22,5	J460
9W1553PT	160	156	120	367	27,9	J550

Penetration CAT-compatible

Orig. No. / Ref. No.	Dimensions in mm				Weight kg	Size
	B	H	K	L		
9J4259	75	86	55	167	2,4	J250
9J4309	90	99	67	220	3,8	J300
9J4359	98	108	75	250	5,4	J350
6Y5409	110	130	88	275	8,2	J400
9W8459 / 9W8452P	120	132	98	300	10,0	J460
9W8559 / 9J4559	144	150	120	344	14,9	J550
7I7609	190	182	146	390	29,1	J600

Pointed rock tooth CAT-compatible

Orig. No. / Ref. No.	Dimensions in mm				Weight kg	Size
	B	H	K	L		
9J4259V	65	75	55	200	2,6	J250
9J4309V	89	97	67	225	4,2	J300
9J4359V	102	111	75	250	6,1	J350
6Y5409V	115	129	88	325	10,0	J400
9W8459V	136	133	98	353	13,4	J460
9W8559V	162	153	120	380	16,6	J550
7I7609V	190	185	146	405	25,5	J600



We can also supply you with tooth systems from **Volvo, Komatsu, Hendrix, LH-Z** and **Combi Parts**.

A tooth for a tooth CAT-compatible

double-pointed rock tooth CAT-compatible

Orig. No. / Ref. No.	Dimensions in mm				Weight kg	Size
	B	H	K	L		
9J4259TV	65	75	55	215	3,2	J250
9J4309TV	89	97	67	242	4,2	J300
9J4359TV	102	111	75	287	6,85	J350
6Y5409TV	115	129	88	320	10,0	J400
9W8459TV	136	133	98	354	15,0	J460
9W8559TV	162	153	120	377	17,4	J550

Tooth holder flush CAT-compatible

Ref. No.	J system size	Dimensions in mm			Weight kg
		L	T	S	
4T1204	J200 (Flush)	233	138	15-20	1,9
1U1254	J250 (Flush)	340	230	20-30	5,5
1U1304	J300 (Flush)	355	235	25-35	8,5
1U1354	J350 (Flush)	425	286	35-40	14,5
107-3404	J400 (Flush)	447	n.a.	40-45	15,4
7T8454 / 8E0464	J460 (Flush)	485	291	45-50	20,4

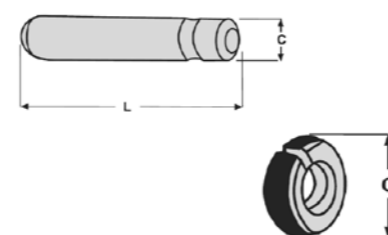
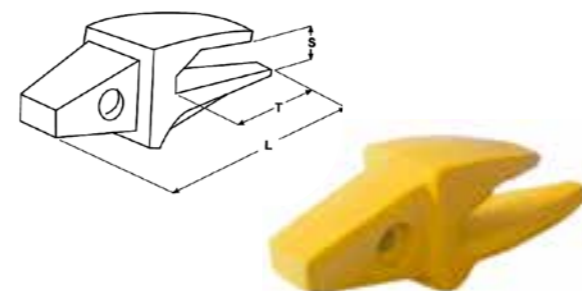
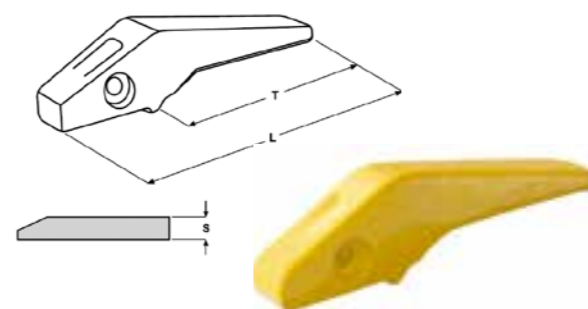
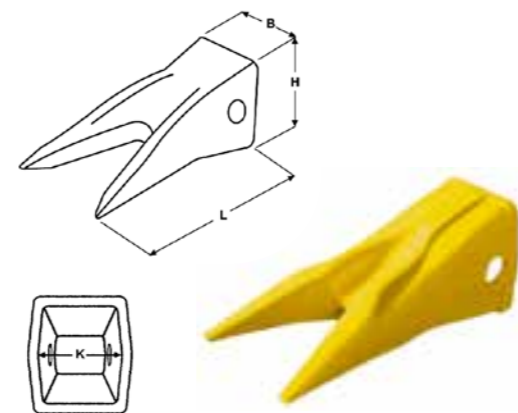
Fork holder CAT-compatible

Ref. No.	J system size	Dimensions in mm			Weight kg
		L	T	S	
8J7525	J200 (1-1/2 shank)	180	100	22	1,6
3G0169	J250 (1-1/2 shank)	255	152	27	4,3
3G6304	J300 (1-1/2 shank)	304	183	33	7,5
3G8354	J350 (1-1/2 shank)	345	206	43	9,3
7T3404	J400 (1-1/2 shank)	385	230	47	13,9
8E6464	J460 (1-1/2 shank)	440	283	52	20,3
1U1553/6I6554	J550 (1-1/2 shank)	513	340	63	32,4
6I6604	J600 (1-1/2 shank)	570	375	79	57,0

Locking pin CAT-compatible

Ref. No.	Size/type	Dimension mm		Ref. No.	Size/type	Dimension mm	
		C	L			C	C
1U4208	Bolt J200	11	57	8E6209	Ring J200	22	
9J2258	Bolt J250	14	77	8E6259	Ring J250/J300	30	
9J2308	Bolt J300	14	92	8E6259	Ring J250/J300	30	
9J2358	Bolt J350	19	105	8E6359	Ring J350/J450	39	
7T3408	Bolt J400	22	118	8E8409	Ring J400	43	
8E0468	Bolt J460	24	133	8E8469	Ring J460	44	
9J4458	(Bolt J450)	19	130	8E6359	Ring J350/J450	39	
1U1558	Bolt J550	25	163	8E5559	Ring J550	52	

*With plastic coating



A tooth for a tooth Bofors-compatible

Torpedo-tooth Bofors-compatible

Ref. No. Original No.	Original No.	Dimensions in mm					Weight kg	Sleeve	Safety catch
		A	B	H	K	L			
921F	31101/4044336	80	41	44	28	340	5,5	9210	CL13
922F	32102/4044428	90	49	52	35	407	9,0	9220	CL15
923F	33101/3031334	100	55	58	45	483	13,7	9230	CL17
924F	34101/3031335	110	62	64	50	545	18,3	9240	CL17
925F	35101/3031336	125	73	75	55	595	26,3	9250	CL19

Torpedo-tooth Bofors-compatible

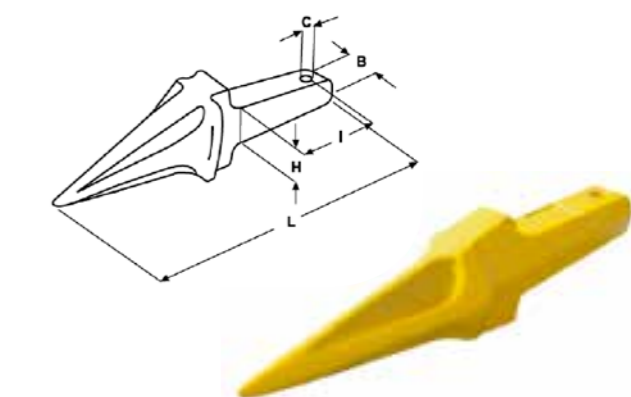
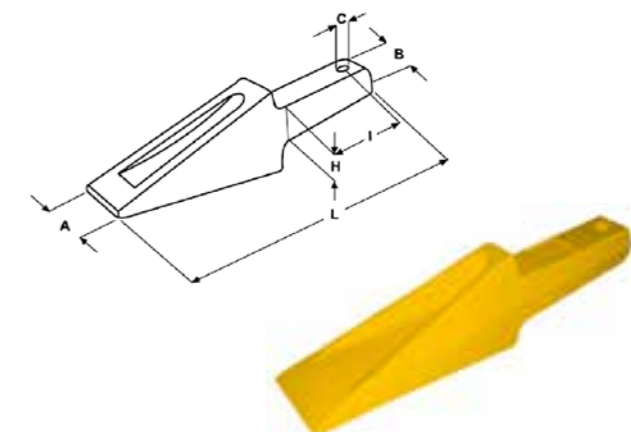
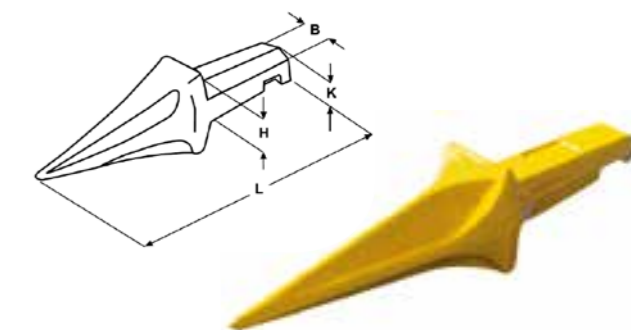
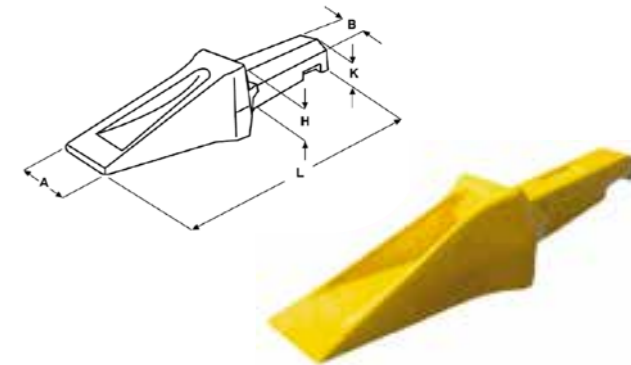
Ref. No. Original No.	Original No.	Dimensions in mm				Weight kg	Sleeve	Safety catch
		B	H	K	L			
921S	31107/4044336	41	44	28	365	5,0	9210	CL13
922S	32103/4046911	49	52	35	435	8,5	9220	CL15
923S	33103/3031364	55	58	45	515	13,5	9230	CL17
924S	34107/3031335	62	64	50	575	18,9	9240	CL17
925S	35107/3031336	73	75	55	633	25,0	9250	CL19

Torpedo-tooth Bofors-compatible

Ref. No.	Original No.	Dimensions in mm				Weight kg	Sleeve	Safety catch
		A	B	H	L			
7500T	904F/3027580	80	50	50	360	6,7	9040	SH14X80
10000T	905F/4046663	90	58	58	410	9,4	9050	SH20X80
15500T	906F/3027689	95	64	64	510	15,1	9060	SH20X100
24000T/310313366	907F/3027512	110	75	75	580	22,0	9070	SH20X120

Torpedo-tooth Bofors-compatible

Ref. No.	Original No.	Dimensions in mm			Weight kg	Sleeve	Safety catch
		B	H	L			
7500TS	904S/3027580	50	50	360	6,7	9040	SH14X80
10000TS	905S/4046663	58	58	410	9,4	9050	SH20X80
15500TS	906S/3027689	64	64	510	15,1	9060	SH20X100
24000TS	907S/3027512	75	75	580	22,0	9070	SH20X120



TEETH COMPATIBLE

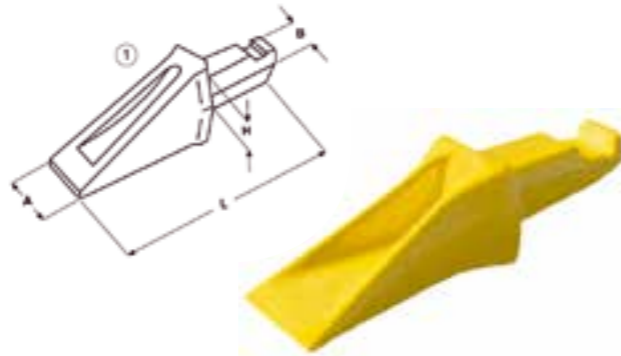
TEETH COMPATIBLE

We can also supply you with tooth systems from **Volvo, Komatsu, Hendrix, LH-Z** and **Combi Parts**.

A tooth for a tooth Bofors-compatible

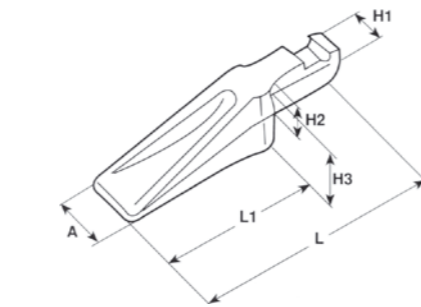
Excavator tooth Bofors-compatible

Ref. No.	Original No.	Dimensions in mm				Weight kg	Sleeve	Safety catch
		A	B	H	L			
931F	30104/4046818	62	36	36	228	2,2	9110	CL11
932F	31104/4046799	65	42	44	279	3,7	9120	CL13
933F	32105/3032682	80	54	96	357	7,1	9130	CL15
934F	33104/3031354	100	59	116	397	11,2	9140	CL17



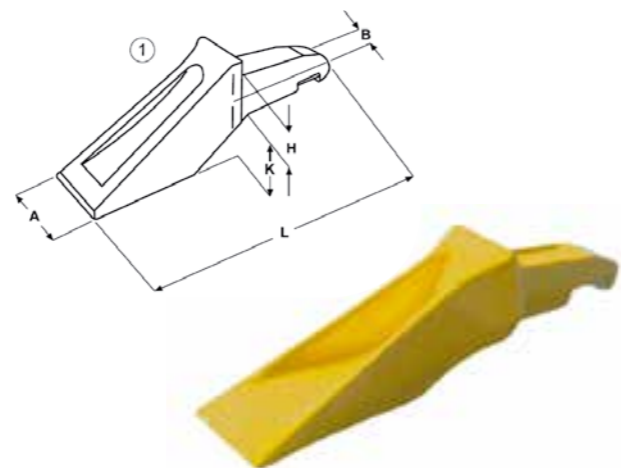
Gripper tooth Bofors-compatible

Ref. No.	Original No.	Dimensions in mm				Weight kg	Sleeve	Safety catch
		B	B1	H1	L			
941	30103/4044291	62	36	36	247	2,1	9110	CL11
942	31103/4044388	70	42	44	292	3,3	9120	CL13
943	3031362	85	54	54	410	7,4	9130	CL15



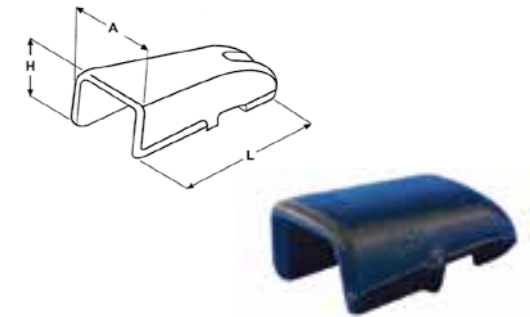
Bucket tooth Bofors compatible

Ref. No.	Original No.	Dimensions in mm					Weight kg	Sleeve	Safety catch
		A	B	H	K	L			
911	30101/4046815	62	32	36	25	258	2,5	9110	CL11
912	31102/4046796	70	37	44	30	308	4,5	9120	CL13
913	32101/3032680	85	48	54	35	375	8,3	9130	CL15
914	33102/3032705	110	52	59	40	415	12,0	9140	CL17
915	3410/3031542	125	70	60	525	22,0	9150	CL17	



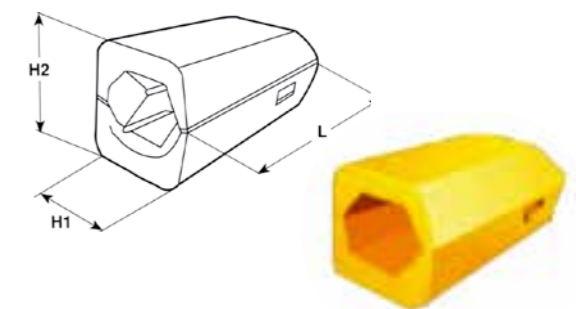
Sleeve Bofors-compatible

Ref. No.	Original No.	Dimensions in mm			Weight kg
		A	H	L	
9110	31006 / 4046816	64	50	121	1,0
9120	31004 / 4046797	77	61	160	2,0
9130	32004 / 4046819	94	74	209	3,8
9140	33004 / 4046882	105	83	216	5,1
9150	34004 / 4044339	125	95	237	7



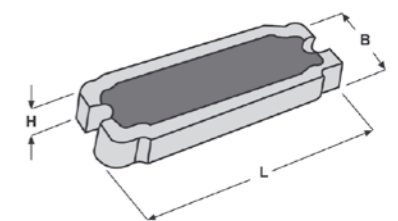
Weld-in sleeve Bofors-compatible

Ref. No.	Original No.	Dimensions in mm			Weight kg
		B	H	L	
9210	31003/3031434	100	95	190	6,8
9220	32003/3031394	115	105	230	9,5
9230	33003/3031395	125	110	268	12,5
9240	34003/3031396	140	125	300	18,0
9250	35004/3031397	155	140	318	27,0



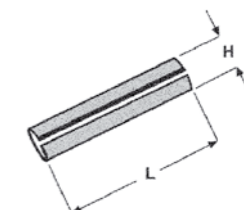
Safety catch Bofors-compatible

Ref. No.	Original No.	Dimensions in mm			Weight kg
		B	H	L	
CL11	30201 / 6254673	27	8	59	0,05
CL13	31201 / 6254675	32	10	73	0,09
CL15	32201 / 6254677	35	10	87	0,13
CL17	33201 / 6254682	40	11	96	0,18
CL19	35201 / 6254679	50	13	120	0,27



Locking pin Bofors-compatible

Ref. No.	Matching the tooth	Dimensions in mm	
		H	L
SH14X80	7500T + 7500TS	14	80
SH20X80	10000T + 10000TS	20	80
SH20X100	15500T + 15500TS	20	100
SH20X120	24000T + 24000TS	20	120





A tooth for a tooth

Excavator tooth Lehnhoff-compatible

Ref. No.	Dimensions in mm				Weight kg
	B	B1	H	L	
301B	61	33	34	125	2,0

Bucket tooth Lehnhoff-compatible

Ref. No.	Dimensions in mm				Weight kg
	B1	B	H	L	
404F					0,8
400F	34	50	34	90	2,0
411F	34	65	34	115	2,6

Sleeve Lehnhoff-compatible

Ref. No.	Dimensions in mm			Weight kg
	A	B	L	
1 for tooth 301B		53	144	1,0
11 for tooth 411F		60	125	1,0
1011 locking plate	98	29		0,06
1012 screw lock				0,1
1004 locking plate	65	28		0,04
1005 screw lock				0,04

Mini tooth

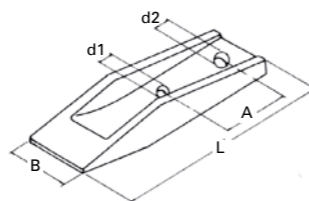
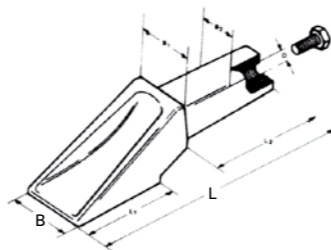
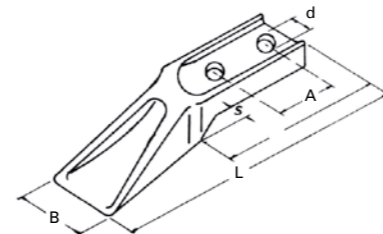
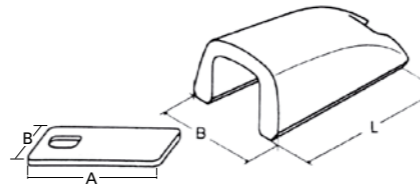
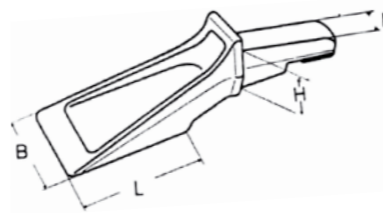
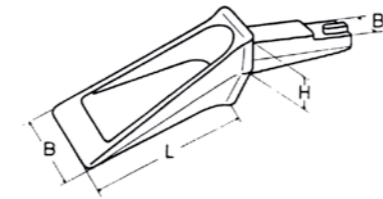
Ref. No.	Dimensions in mm				Weight kg
	A	B	d Ø	L	
Mini-ZI	40-45	50	13	185	1,1
Mini-ZII	55-60	60	17	225	1,5
Mini-ZIII	84	60	17	245	1,7

Bucket tooth Atlas-compatible

Ref. No.	Dimensions in mm		Weight kg
	B	L	
760 (830899-NB) (Atlas)	60	220	1,5

Gripper tooth

Ref. No.	Dimensions in mm			Weight kg	d1	d2	B
	A	L	S				
876	68	209	17	1,5	16	18	62
8657.216 / 640000050	85	209	17	1,5	17	17	62



We can also supply you with tooth systems from **Volvo, Komatsu, Hendrix, LH-Z** and **Combi Parts**.

Gripper tooth O+K-compatible, Atlas

Ref. No.	Dimensions in mm				Weight kg
	A	B	d Ø	L	
852/2 (O+K) 033475	110	60	26	405	7,5
852/3 (O+K) 033016	100	50	26	315	4,9
873/3 (Atlas) 456113	90	75	26	330	5,5

Gripper tooth 3-hole

Ref. No.	Type	Dimensions in mm							Weight kg	
		A	B	C	C1	D	L	L1		d Ø
879	Atlas	65	40	78	60	16	280	122	17	3,0
880	Atlas	75	65	90	70	20	328	125	21	5,3
877	LH	75	40	140	80	20	328	125	18	5,3

Tooth tip

Ref. No.	Dimensions in mm		Weight kg
	A	B	
23Z (43171460) (Zettelmeyer/ H&L)	140	54	1,1
23 (43171486) Safety catch	58	19	0,1
23 Adapter (43171478) Holder			1,75

Ripper tip

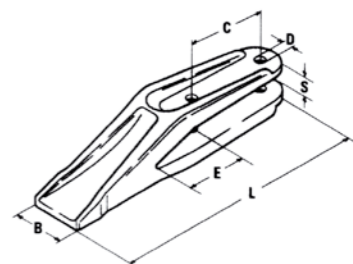
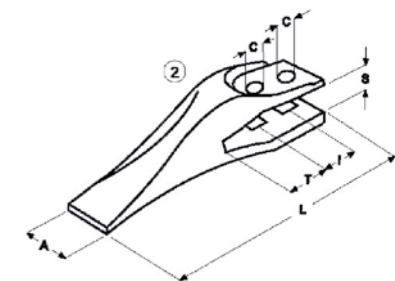
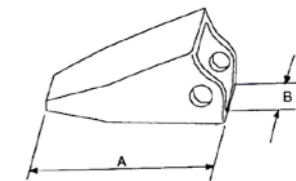
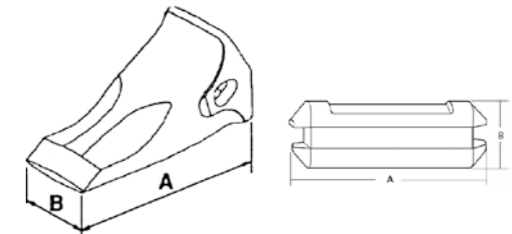
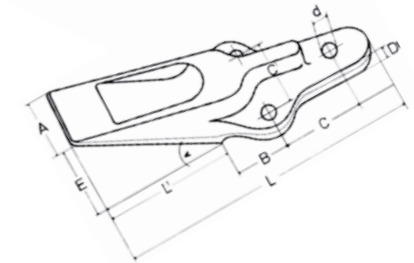
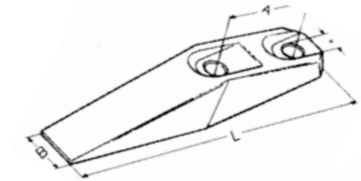
Ref. No.	Dimensions in mm		Weight kg
	A	B	
482a (Faun) 141-0891	140	54	1,1
SH 16x50 Safety catch			

Fork tooth JCB-compatible

Ref. No.	Dimensions in mm						Weight kg
	A	C	I	L	S	T	
531/03205 (JCB)	50	20	45	260	22	51	3,0

Fork tooth

Ref. No.	Dimensions in mm						Weight kg
	B	C	d Ø	E	L	S	
17-7 (6640)	49	40-45	13	36	185	17	1,4
E20-10	54	55	17	44	222	22	1,6

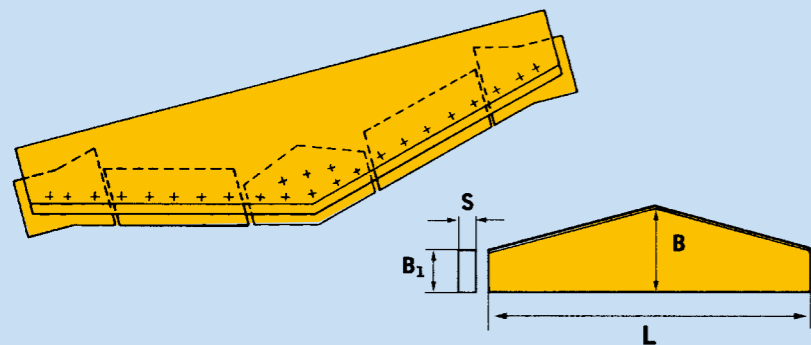


TEETH COMPATIBLE



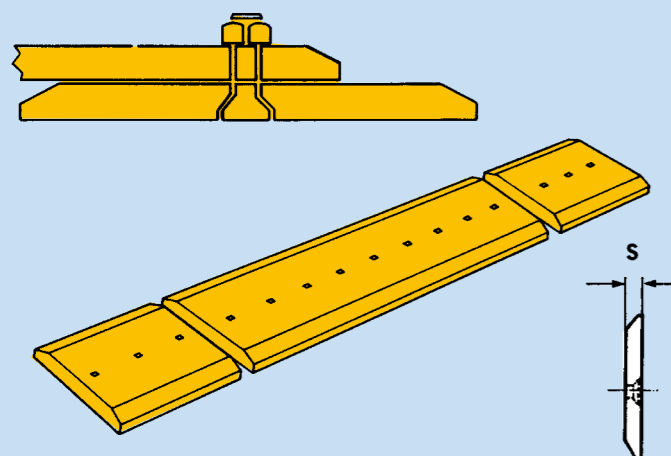
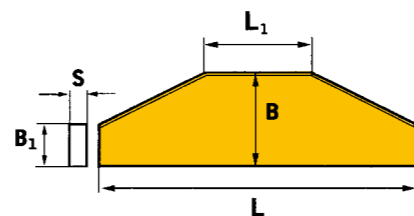
WEAR STRIPS AND BLADES

Razor-sharp



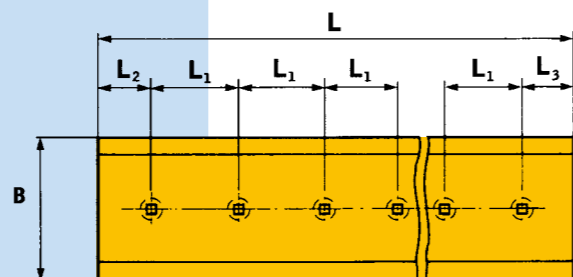
Trapezoidal and tip cutting

Available in Hardox for different detachable blades.



Detachable blades

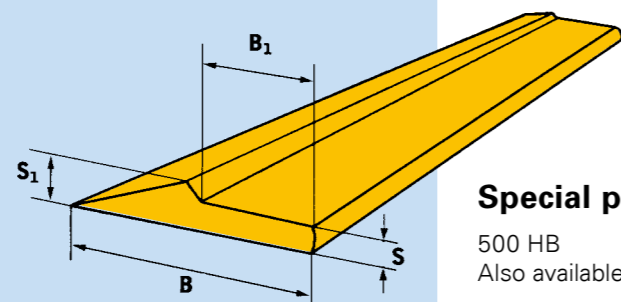
Available in HB 400 and HB 500, with single or double chamfer, for all common manufactured types or as per drawing.



Special profiles

S mm	B mm	B1 mm	S1 mm	Weight kg / m
11	101	46	21	9,5
16	151	68	32	20,5
19	203	127	32	32,0
29	254	130	57	65,0
40	254	130	68	87,0

Other dimensions are available on request.



Special profiles

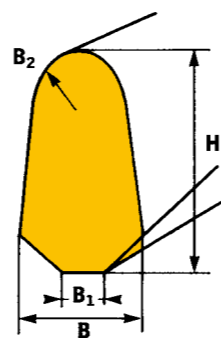
500 HB
Also available in Brinell 280.

Bar profiles

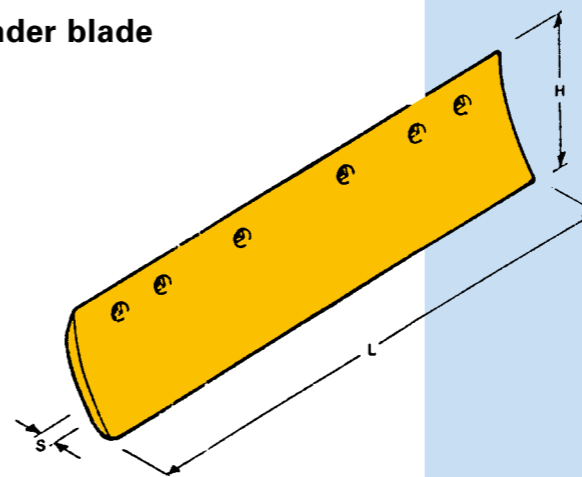
H mm	B mm	B1 mm	B2 mm	Weight kg / m	Length mm
30	16	4	5	2,8	3.000
40	22	5	7	5,2	3.000
50	27	6	10	8,4	3.000
65	30	10	10	12,0	3.000
68	37	12	14	15,7	3.000

Bar profiles

500 HB



Grader blade

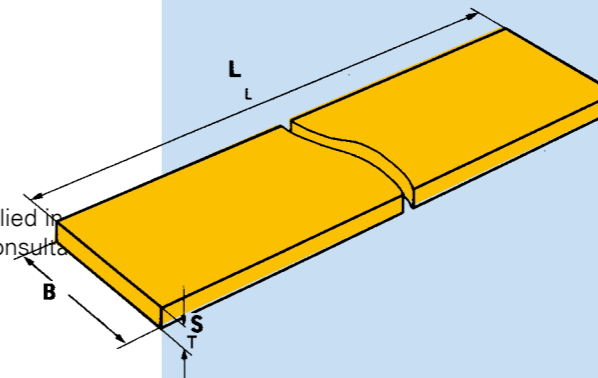


Grader blade

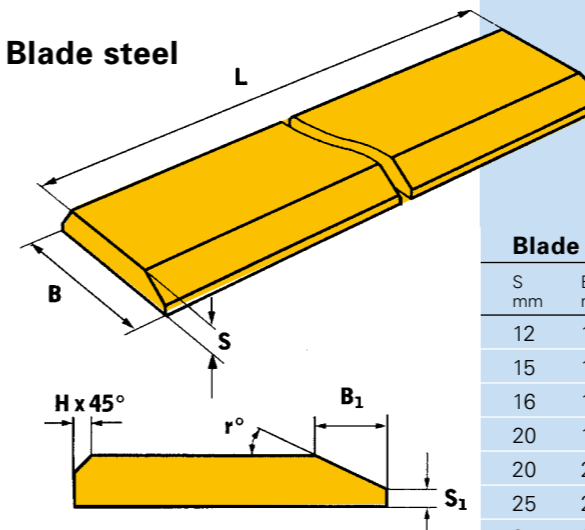
Ref. No.	Width H mm	Thickness S mm	Length L mm	Bore inches	Number of holes
3G7966	152,4	19	1524	5/8	11
5D9553	152,4	15,88	1828	5/8	13
5D9556	152,4	19	1828	5/8	13
5D9557	152,4	19	2133	5/8	15
5D9558	203,2	19	1828	5/8	13
5D9559	203,2	19	2133	5/8	15
9W2340	203,2	19	1524	5/8	11

Wear strips

450 HB
Wear strips can also be supplied in lengths of 6,000 mm after consultation.



Blade steel



Blade steel

S mm	B mm	B1 mm	S1 mm	Chamfer H	r	Weight kg / m
12	100	20	4	-	25°	9,2
15	120	24	4	5 x 45°	25°	14,4
16	150	25	4	5 x 45°	25°	17,8
20	150	30	6	5 x 45°	25°	22,1
20	200	30	6	5 x 45	25°	30,1
25	200	37	8	5 x 45°	25°	37,3
25	250	37	8	5 x 45	25°	47,3
30	250	44	10	8 x 45°	25°	56,1
30	270	44	10	8 x 45°	25°	60,9
35	270	50	12	9 x 45°	25°	70,6
30	300	50	12	9 x 45°	25°	65,5
35	300	50	12	9 x 45°	25°	77,3
40	300	55	14	9 x 45°	25°	89,8
50	300	70	17	11 x 45°	25°	110,1

Grading blade steel, undrilled

Available in H400 and H500

Other dimensions are available on request.

Wear strips

S mm	B mm	Weight Kg / m	Length mm
10	80	6,4	3.000
10	100	8,0	3.000
12	80	7,7	3.000
12	100	9,6	3.000
12	150	14,4	3.000
15	80	9,6	3.000
15	100	12,0	3.000
15	120	14,4	3.000
15	150	18,0	3.000
15	200	24,0	3.000
20	80	12,8	3.000
20	100	16,0	3.000
20	120	19,2	3.000
20	150	24,0	3.000
20	200	32,0	3.000
25	80	16,0	3.000
25	100	20,0	3.000

Grading blade steel

S mm	B mm	2x chamfer mm	Weight kg / m
16	150	2x 45°	17,8
20	150	2x 45°	22,1
20	200	2x 45°	30,1
25	200	2x 45°	37,3
25	250	2x 45°	47,3
30	300	2x 45°	72,0
30	330	2x 45°	79,2
35	330	2x 45°	92,4
30	380	2x 45°	91,2
35	380	2x 45°	106,4
40	330	2x 45°	105,6
40	380	2x 45°	121,6
40	400	2x 45°	128,0

TRANSPORTATION, STORAGE AND COLLECTION SYSTEMS



HS chute
Ideal for transport and storage

- > Fixture for fork carriage
- > Stackable
- > Custom sizes
- > Painted in desired RAL colour



FLATBED BOXES

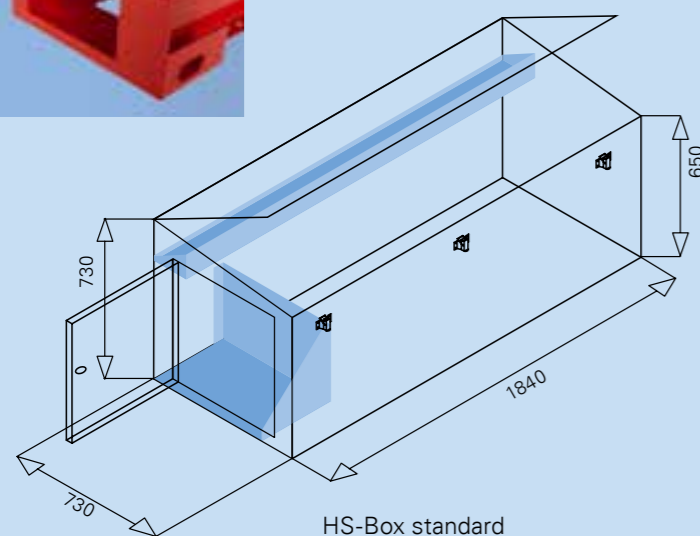
HS-BOX deLuxe



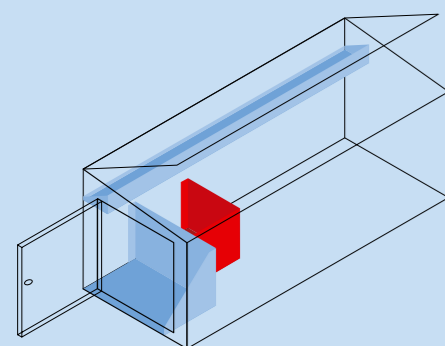
HS-BOX light



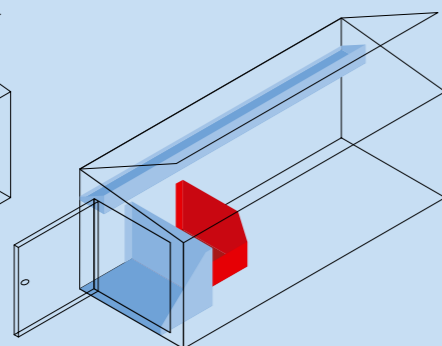
Outer dimensions: HS-BOX 1840 x 730 / 650 x 730 mm (L x H x W)
Width in the side lid latch area: 1890 mm
Opening lid top: 1800 x 690 mm
Opening side doors: 550 x 550 mm
Storage tray: 1836 x 160 x 170 mm (L x H x W)
Storage box standard 540 x 350/50 x 365 mm (L x H x W)



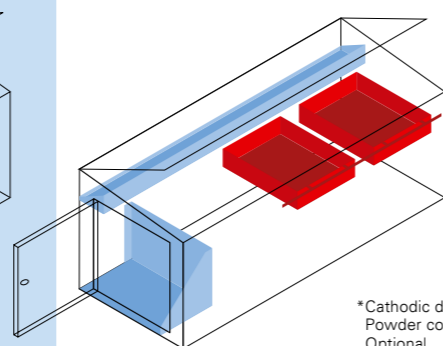
HS-Box standard



Storage box L



Storage box XL



Storage box Top

*Cathodic dip-coated
Powder coating
Optional
**Cathodic dip-coated
and powder-coated

Perfect look and function HS-Box deLuxe

Made of 2 mm thick sheet metal. Surfaces sealed for protection against corrosion with cathodic dip-coating and outside powder-coated in your desired RAL colour. The modular concept allows you to select different inserts, dividers and containers depending on your requirements. Custom designs are also available on request.

- > For storage and transportation of tools, cans, etc.
- > Extremely sturdy
- > Access from the ground via the side opening
- > Individual configurations
- > Cathodic dip coating on the outside
- > Great look – powder-coating available in all RAL colours

Additional configurations (optional)

Transport frame

From 3/2mm steel plate** with crane and forklift fork receptacle 1850 x 735 mm

Storage box L

Riveted to the box bottom
2 mm steel plate*
380 x 300 x 360 mm (L x H x W)

Storage box XL

Riveted to the box bottom
2 mm steel plate*
450 x 300 x 360 mm (L x H x W)

Storage box Top

For hooking in at the top
2 mm steel plate*
495 x 150 x 400 mm (L x H x W)
Maximum of 3 top boxes can be inserted

HS-BOX light made of aluminium

- > For storage and transportation of tools, cans, etc.
- > Extremely light, only 35 kg
- > 2 mm aluminium checker plate
- > Lid folding upward made of 2 mm thick aluminium checker plate
- > 4 lid hinges (80 x 60 mm)
- > 3 lockable latches for closing the lid
- > 2 propstays for easy loading and unloading
- > Dimensions 1840 x 715/630 x 730 mm (W x D x H)

Special equipment

Side doors for convenient access from the street

- > Side door on driver's side
- > Side door on passenger side
- > Feet for lifting with the forklift



FLATBED BOXES



The smart decision: HS-BOX basic

On the transporter platform, the **HS-BOX basic** is the smart alternative to a home-made wooden box. The HS-BOX basic consists of a kit of 6 precision-fit components which are very easy to assemble. All you need is a commercially available rivet gun.

Unpack – assemble – load – upload. And drive off

- HS-BOX basic**
- > Box body from 1 mm galvanised sheet metal
 - > Lid folding upward made of 1.25 mm thick galvanised sheet metal
 - > 4 lid hinges (80 x 60 mm)
 - > 3 lockable latches for closing the lid
 - > 2 propstays for easy loading and unloading
 - > Weight 57 kg

Accessories / equipment

Convenient access from the ground – you only need to fold down the tail lift.

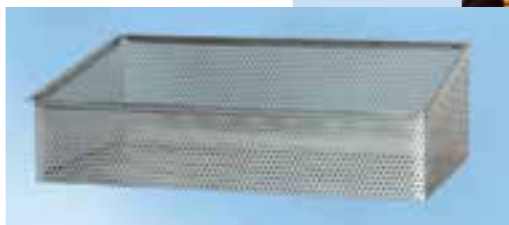
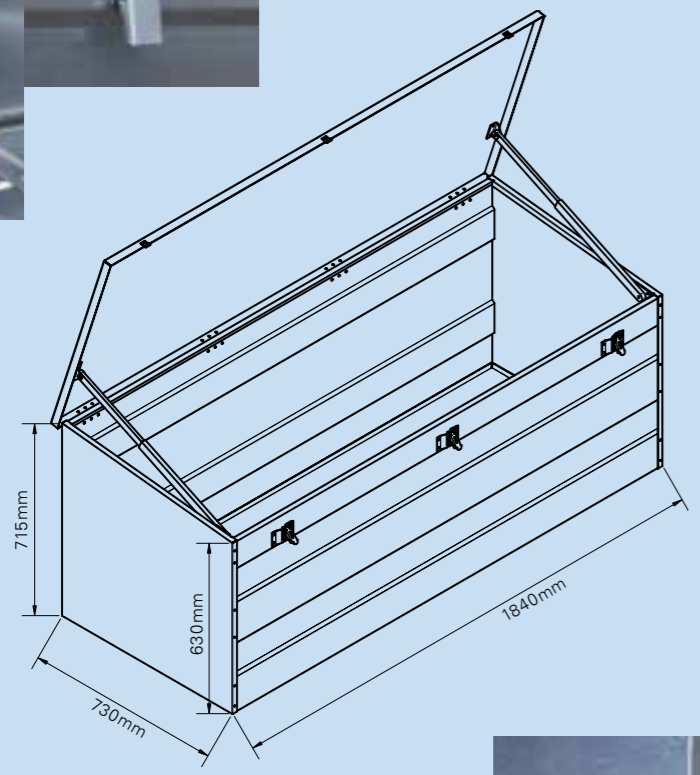
- > **Side door on driver's side**
- > **Side door on passenger side**
Convenient loading and unloading to/ from the flatbed with a forklift
- > **4 feet made of galvanised sheet steel**
for lifting with the forklift Load – upload and drive off
- > **HS-BOX basic assembled**
Great look
- > **Powder coating**
In desired RAL colour including Assembly

Tool and special boxes

Solutions for your requirements – we manufacture according to your specifications.

- > Whether a simple tool box, front wall box or pallet truck storage, etc. ...
- > Transport boxes for tractors and forestry equipment
- > Whether made of 1/2/3/4 mm thick sheet metal
- > Cathodic dip-coated and powder-coated or only galvanised
- > With or without frame
- > Various suspension versions
- > On or under the flatbed
- > Available with a selection of latches and locks
- > Or a simple tool box latch

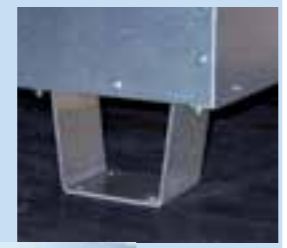
We implement your requirements – tell us what we can do for you.



Wire mesh boxes



SK1000 – storage box system for transporter vehicles





The new order: LadeBox cargo box



LadeBOX cargo box EK1000

(Without load-securing sets), 1.080 x 450 x 965 mm (W x H x D) Weight 75 kg maximum load 130 kg, Item No. **7170 1080**



LadeBOX insert PK3000
(Without load-securing sets), galvanised, maximum load 130 kg, 350 mm overall height Item No. **2100 1423**
From 450 mm overall height Item No. **2100 1421**

LADE BOX

LadeBOX

- > Sendzimir-galvanised 1 mm thick steel plate
- > Lid in RAL 9016 powder-coated / other RAL colours at extra cost
- > Convenient to open using the patented PK3000 lid guide system
- > Lid can slide in at the bottom
- > 2 PK locks on the side
- > 3 clamps for fastening in the EK1000
- > Easy installation without drilling using 3 supplied clamps and two adjusting screws in the spare wheel well EK1000

LadeBOX insert

- > 2 trays with ball roller guides for up to 20 tension straps and 20 ratchets, galvanised
- > Variable partition, galvanised
- > 2 x plastic containers 600 x 400 x 130 mm for 60 anti-slip mats and up to 26 edge protectors
- > 1 OSB plate 400 x 930 mm
- > Optional: Battery powered LED magnetic light (batteries are not included)



HS-Schoch is System supplier

Steel construction

As a professional in structural steel engineering we have more than

20 years of expertise in the machining of steel. From cutting to shaping to welding and machining, HS-Schoch can machine up to 200 mm thick metal sheets.

Our machinery includes laser, plasma and flame-cutting machines, press brakes and several machining centres.

We can implement your requirements and your special requests.

Also in HARDOX® wear plate.

See page 48/49.

Sheet metal working

When it comes to sheet metal, we are your partner. With our modern sheet metal duct line, a laser-cutting machine, press brakes and punch systems, we are able to implement your designs and plans.

Cathodic dip-coating

And to ensure that you and your customers enjoy your products for a long time, you can leave it in our hands to also protect them against corrosion.

KTL stands for »cathodic dip-coating« and provides the perfect combination of corrosion protection, quality, economy and environmental friendliness.

Cathodic dip-coating guarantees effective, durable and scratch-resistant corrosion protection, which is resistant against stone-chipping and salt water.

Powder coating

Because beauty is in the eye of the beholder and a perfect surface makes your products more attractive and desirable, we like to coat them in your favourite colour. Whether RAL, HKS, NCS or custom colours.

In addition, the powder-coating provides additional effective high-quality corrosion protection.



LADEBOX CARGO BOX SYSTEM SUPPLIER



More truck is simply not possible
Hand polished to a high gloss – bullbar, headlight bar, wheel trims, cab steps, side step pipes and brush guard – made of V2A stainless steel.
And all of these for DAF, IVECO, MAN, MERCEDES-BENZ, RENAULT, SCANIA or VOLVO.



Tuning und Styling
1. PLATZ
2005-2015

Die besten Marken 2015
Die Leserwahl von





HS-Schoch Group



HS GROUP CONTACT

HS-Schoch Lauchheim



HS-Schoch Coswig / Saxony Anhalt



ZFE Achern-Gamshurst



HRZ Oranienbaum-Wörlitz



HS-Schoch GmbH
Truck accessories/truck styling
D-73466 Lauchheim

HS-Schoch GmbH & Co.KG
Construction machinery accessories
Attachments, wear parts, Service
D-73466 Lauchheim

HS-Schoch GmbH & Co.KG
Construction machinery accessories
Attachments, wear parts, Service
D-06869 Coswig / Saxony Anhalt

HS-Schoch GmbH
Sheet metal working
Cathodic dip-coating/powder-coating
D-06869 Coswig / Saxony Anhalt

ZFE GmbH
Accessories for earthwork equipment
D-77855 Achern-Gamshurst

HRZ
Blechbearbeitung- und Handels
GmbH & Co. KG
D-06785 Oranienbaum



ZFE GmbH
Accessories for earthwork equipment

Am Risisee 15
77855 Achern-Gamshurst
Phone +49 (0) 7841-2057-0
Fax +49 (0) 7841-2057-40
Email: info@zfe-gmbh.de

www.zfe-gmbh.de

We only deliver at our general terms and conditions, available at www.hs-schoch.de

All images, symbols and designations that refer to other companies or manufacturers are used only for reference purposes.

As of: March 2016





www.zfe-gmbh.de



- Backhoe bucket
- Rock bucket
- Tilting bucket
- Trench-clearing bucket
- Skeleton bucket/rock bucket
- Trapezoidal bucket
- Standard bucket
- 4-in-1 combination bucket
- High-dump bucket
- Side-dump bucket
- Light material loading bucket
- Skeleton bucket
- Fork carriage
- Clamshell gripper
- Orange peel grab
- Universal gripper
- Demolition and sorting grab
- Ripper tooth
- Ripper bucket
- Demolition arm
- Demolition technology
- Quick coupler
- Snow blade
- Wood splitter
- Timber grabber
- Land-clearing rake
- Brushwood rake
- Root slicer
- Chutes
- Special designs
- Repairs / conversions
- Teeth
- Blades
- Wear parts, accessories



ZFE GmbH is certified
according to DIN ISO 9001: 2008
and DIN ISO 50001: 2011